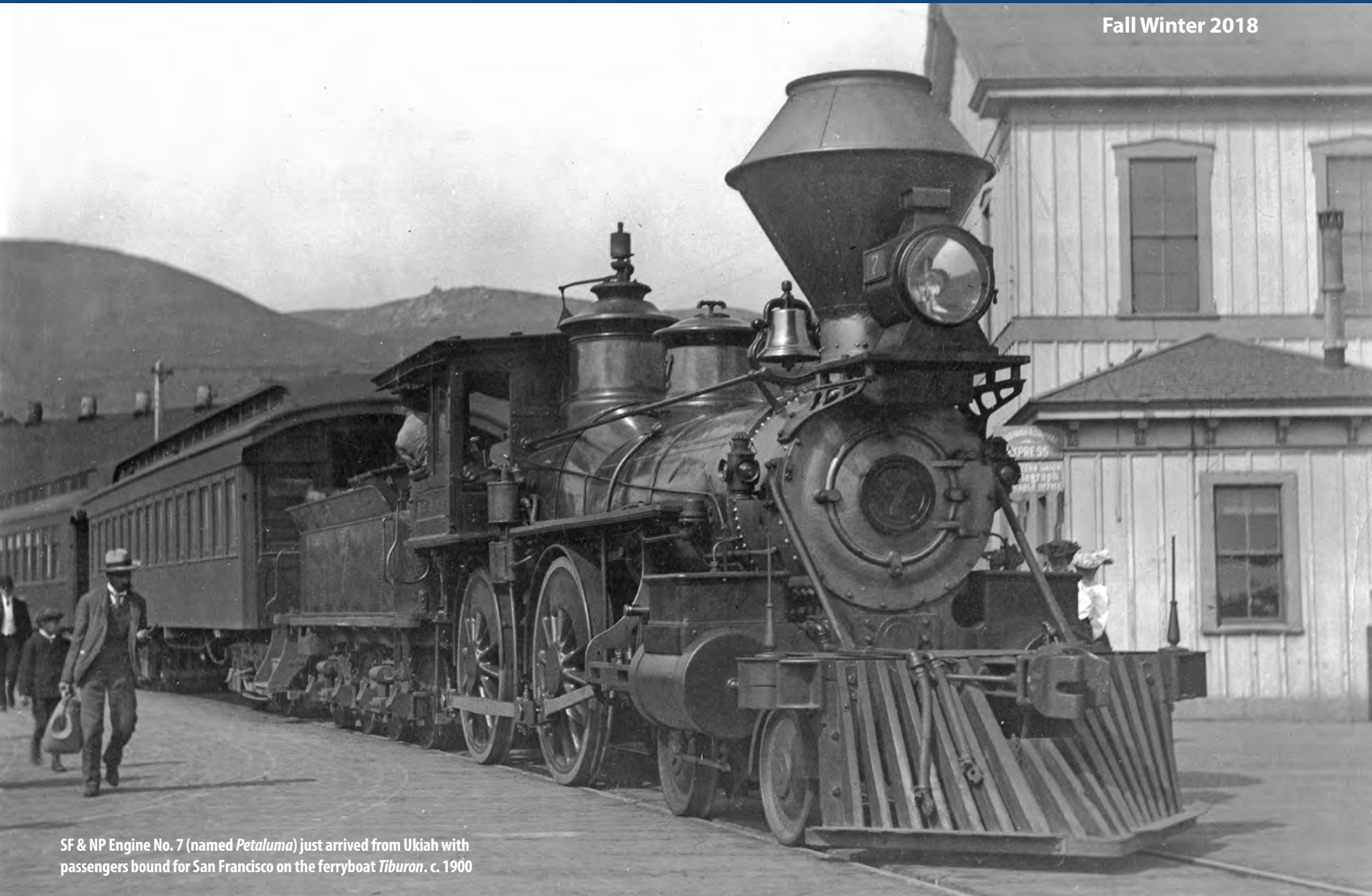


LANDMARKS

Living History ~ The Tradition Begins With You

Fall Winter 2018



SF & NP Engine No. 7 (named *Petaluma*) just arrived from Ukiah with passengers bound for San Francisco on the ferryboat *Tiburon*. c. 1900

Landmarks Society Annual Meeting
Holiday Art & Craft Sale
Music at Old St. Hilary's
Become a Member of the Landmarks Society

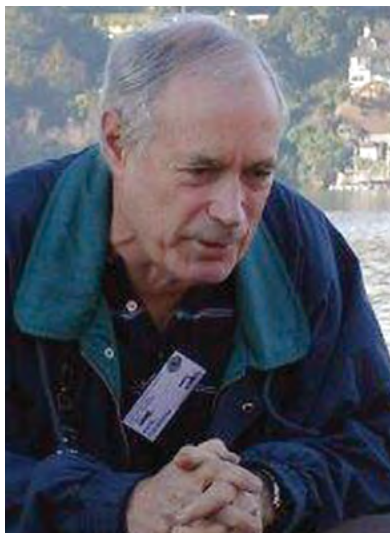
Become a Landmarks Volunteer
The Railroad Timeline
The History of the Donahue Building

President's Corner

After a busy summer of many travelers visiting our four Landmarks sites, we are coming toward the end of our season. All sites will be open on their scheduled days until the end of October. During the winter months we will host visitors on "Sunny Sundays" at our Railroad & Ferry Depot Museum. We will also be open at the museum the day after Thanksgiving, the day after Christmas and New Years Day.

Our latest big news is that in August we hired Patty Flax as our new Executive Director. She had been in the role of Interim Executive Director from April through August and has an excellent record of accomplishment in that time. When you stop by the Landmarks Office be sure to welcome her to the job.

We also have two new Landmarks board members. Bob Harrison was elected to the Board



at the July meeting. He is very involved with the Railroad & Ferry Depot Museum and has agreed to chair the Board's Marketing Committee. At the September board meeting, we elected Suzanne White to the Board. She has been active at the Art & Garden Center and has in-depth experience in grant applications and non-profit management.

To close out the year, we will be raising funds for the Railroad & Ferry Depot Museum which needs a new roof. The roof of the historic Depot building, built in 1884, is made of corrugated metal and has been badly stressed by winter storms and our salt air. The last time we did any repair work on the roof was over 20 years ago.

Be sure to put our Landmarks Annual Member Meeting on your calendar. It's November 11, 2018 from 4-6 pm at the Tiburon Town Hall. We will have a review of the year, present our docent service awards, and congratulate our Landmarks Volunteer of the Year.

Phil Cassou

Landmarks Society

2018 Board Officers

Phil Cassou, *Board President*

Jim Allen, *Co-Treasurer*

Brooke Halsey, *Co-Treasurer*

Helen Lindqvist, *Secretary*

Board Members

Cathleen Andreucci	Peter Brooks
Eva Buxton	Bob Harrison
Gay Keil	Phil Maslin
Jean Wang Lin	Suzanne White

2018 Junior Board Members

Lauren Halsey, Lucas Lagerling,
Tessa Kamanski, and Maya Kress

Staff

Patty Flax, *Executive Director*

David Gotz, *Archivist*

Cathy Larson, *Community Outreach Manager*

Angelica Andrews Buot, *Educator*

Editors/writers: Phil Cassou, Susan Cluff,

Patty Flax, Dave Gotz and Bob Harrison

Newsletter design:

Mark Shepard, shepgraphics.com

And The Award Goes To

It is with great pleasure that the Landmarks Society awards Suzanne White with the title of Volunteer of the Year. She has worked tirelessly in the gardens at the Art & Garden Center and no task has been too big or too small. She has an exciting vision for the Center and lots of great



ideas to make it more of a community asset for residents, gardeners and artists. She is very much a "roll up your sleeves and get the job done" person and we feel fortunate to have her sharing her talents and energy with the Landmarks Society. In addition to all of her work in the gardens, Suzanne has recently joined the Landmarks Board and will be extending her efforts into other Landmarks projects and events. She has an MBA from Rensselaer Polytechnic Institute and moved here two years ago from Bethesda, Maryland. Suzanne will be presented with the Volunteer Award at our Annual Member Meeting at Tiburon Town Hall on November 11. Please come and recognize her extraordinary contributions.

.....
Except where noted, all photos from the Landmarks Archives

Director's Message

As a largely volunteer organization, we couldn't continue to do what we do without the many people who donate their time, effort and resources to preserve and share our history through our Landmarks exhibits, tours, lectures and publications. As a non-profit, we prosper by the graces of our generous members and supporters. We'd like to give a huge thank you to our community for 59 years of support without which none of this could have been achieved.

This year, we've had thousands of visitors from around the world enjoy our historic properties. We've hosted tours for third-graders at China Cabin and the Railroad Ferry & Depot Museum, been home to summer camp for young stewards with The Ranch, inspired plein air painters and master gardeners at the Art & Garden Center, and hosted more than 60 weddings and celebrations at our historic properties. In doing so, we have continued to fulfill our mission to share our historical buildings with our community and the public.

Our mission also directs our society to maintain and preserve all four of our historic properties.

During the slower winter season we focus on repair and maintenance projects. Thanks to the generous donations of our members and supporters who contributed to our fall/winter campaign in 2017, we will be refinishing the hardwood floors at Old St. Hilary's Chapel. They are long overdue for a refresher and we can't wait to see them shine again.

Our to-do list seems never-ending with new projects lined up as soon as the last is completed. Our goal this fall is to raise funds for a badly needed new metal roof for the Railroad & Ferry Depot Museum. The roof was last worked on more than 20 years ago and has significant leaks. The last few years, we've carefully placed buckets around the museum to capture the rainwater during storms. It's time to fix the leaks and install a new roof so that our community can enjoy this unique and important museum for generations to come. Preliminary estimates suggest costs will be in the \$80,000 range as we need to include structural upgrades. Please support our Roof for the Railroad & Ferry Depot Museum Campaign. See the contribution form on the next page for roof donation opportunities.

Please join us November 11, 2018 from 4-6 pm at Tiburon Town Hall for our Annual Meeting. There will be an Artist as Historian exhibit celebrating the Donahue Building, wine, appetizers, and perhaps a surprise cocktail. We are looking

forward to honoring our fantastic docents and acknowledging our Volunteer of the Year. We will also have a big reveal from a local artist. You won't want to miss this.

Mark your calendars for the 14th annual Holiday Art & Craft Sale, Saturday, December 1, 2018 from 10 am - 4 pm. We have an amazing group of local artisans participating in this year's show and it's a perfect opportunity to get a head start on your holiday shopping with unique, one-of-a-kind gifts. I recommend arriving early if you want to leave with a bottle of coveted pear brandy.

We're looking forward to your continued support in 2018 and celebrating the Landmark Society's sixtieth year with you all in 2019!

With gratitude and wishing you all a lovely fall and holiday season,

Patty Flax

P.S. I'm thrilled to have accepted the Executive Board's invitation to stay on as Executive Director having served as interim for three months. It is a joy to work with such a dedicated Board and community of Landmarks' supporters. Every day I meet a new Landmarks' member who shares with me another tidbit of local history. I'm honored and excited to be a part of the organization.



PHOTO BY GARY FERBER

Carol Weiss regaled visitors with her pastel technique. Several fine art pieces were turned out by amateur artists who attended the Art & Garden Open House.



PHOTO BY GARY FERBER

Phil Cassou, David Gotz, Patty Flax, Cathy Larson, Jeanne Price, Suzanne White, Phil Maslow, and Angelica Andrews Buot enjoyed lemonade, cornhole and badminton at the Art & Garden Center Open House in August.

Keep Our History Alive!

The Railroad and Ferry Depot Building Needs a New Roof.

Please consider contributing to the repair of this historical site so it will remain a museum for experiential learning and we can continue to share Tiburon's rich railroad and maritime history with generations to come.

I'd like to support the new roof campaign.
You can count on me.

- Railroad and Ferry Depot Patron - \$2,500
- Station Master - \$1,000
- Engineer - \$750
- Machinist - \$500
- Northwestern Pacific Railroad Rider - \$200
- Other _____

Please cut out and mail in the attached envelope.

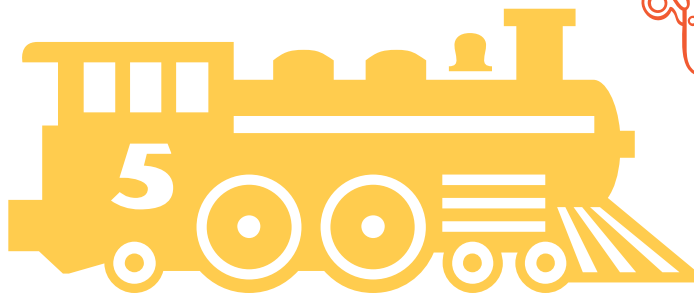
- VISA MasterCard

Credit Card Number _____

Expiration Date _____

Security Code _____

- Check enclosed

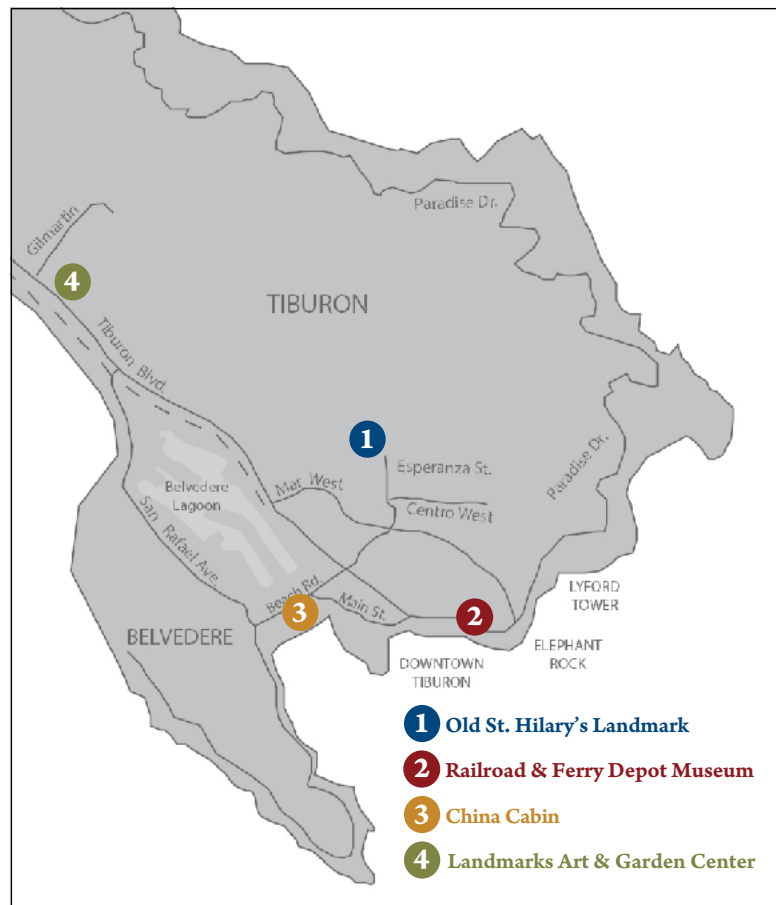


Landmarks

Holiday Art & Craft Sale

Saturday, December 1st
10 to 4

Landmarks Art & Garden Center
841 Tiburon Blvd., Tiburon



Calendar

Fall Winter 2018 – 2019

OCTOBER

Thursday, October, 25
10 am to 2 pm
Free Plein Air Painting
Join us at the Art & Garden Center



NOVEMBER

Artist as Historian: The Donahue Depot & Tiburon Rail Yard
A Collection of fine art displayed at the Tiburon Town Hall

Sunday, November 11
4 pm to 6 pm
Annual Meeting – Tiburon Town Hall

Sunday, November 18
4 pm
MUSIC AT OLD ST. HILARY'S -
Hiroya Tsukamoto

Friday, November 23
1 - 4 pm
Railroad & Ferry Depot Museum Open

Thursday, November 29
10 am to 2 pm
Free Plein Air Painting
Join us at the Art & Garden Center

DECEMBER

Artist as Historian: The Donahue Depot & Tiburon Rail Yard
A Collection of fine art displayed at the Tiburon Town Hall

Saturday, December 1
10 am to 4 pm
Holiday Art & Craft Sale

Sunday, December 9
1 & 4 pm – Two Performances
MUSIC AT OLD ST. HILARY'S -
Musae - *Dancing Day!*

Wednesday, December 26
1 - 4 pm
Railroad & Ferry Depot Museum Open

JANUARY

Tuesday, January 1
1 - 4 pm
Railroad & Ferry Depot Museum Open

Thursday, January 24
10 am to 2 pm
Free Plein Air Painting
Join us at the Art & Garden Center

FEBRUARY

Wednesday, February 6
9 am to Noon
Marin Master Gardeners Talk
Open to the Public

Thursday, February 28
10 am to 2 pm
Free Plein Air Painting
Join us at the Art & Garden Center

MARCH

Wednesday, March 6
9 am to Noon
Marin Master Gardeners Talk
Open to the Public

Thursday, March 28
10 am to 2 pm
Free Plein Air Painting
Join us at the Art & Garden Center

The Railroad in Tiburon: *Historical Milestones*

By Phil Cassou & Dave Gotz

August 30, 1869 Peter Donahue drives the first spike of the San Francisco & North Pacific Railroad (SF & NP). By 1870, the tracks ran from Petaluma to Santa Rosa.

June 2, 1879 SF & NP rail line completed from Petaluma to San Rafael.

October 22, 1882 Donahue organized the San Francisco and San Rafael Railroad to connect from the county seat to Point Tiburon. Construction begins in November.

1883 Construction proceeds on Tiburon rail yards, excavating part of the Tiburon point using one of the first new-fangled steam shovels as well as 400 men with picks, shovels and drills.

April 28, 1884 Tiburon becomes

the southern terminus of the SF & NP.

May 1, 1884 Donahue's first passenger train with five bright yellow coaches meets the ferryboat *James M. Donahue* arriving from San Francisco and pulls out of Tiburon headed for San Rafael.

1884-5 The railroad and ferry terminal building (later called the Donahue building) is constructed at the far end of the yard, attached to the ferry pier.

November 26, 1885 Peter Donahue dies of pneumonia shortly after inspecting the Tiburon railroad shops on a cold, blustery day.

September 1886 Passenger shed long enough to shelter six passenger coaches on two tracks is constructed opposite the ferry terminal building.

October 1, 1887 Several buildings



Looking down Main St. from Corinthian in 1909. The rebuilt McDonogh/McNeil building is on the right, the *Ukiah* and the *James M. Donahue* ferries are docked, and in the distance is the depot building and the long passenger shed.



Tiburon circa 1891 shows the rail yard in the foreground, the dock for the new ferry *Ukiah*, the Sonoma House Hotel and the 12 room boarding houses on the right side of Main St. that had recently been barged down from Donahue Landing. The original Corinthian Yacht Club house is perched at the end of the island and in the distance is Belvedere Cove and shore.

including boarding houses, the machine shop (which would become the paint shop) and the massive Sonoma House Hotel are barged from Donahue Landing near Lakeville on the Petaluma River to Tiburon.

1888 New roundhouse and shops built in Tiburon rail yard; piers rebuilt due to damage to pilings by shipworms.

September 1889 Construction of the ferryboat *Ukiah* begins at Tiburon.

May 17, 1890 Ferryboat *Ukiah* launched at 10:43 PM in Tiburon (near the corner of Main St.). Built at a cost of \$200,000, her capacity is 1,100 passengers and 10 box cars.

December 28, 1890 The *Ukiah*

makes her trial trip, covering the six and a half mile journey from San Francisco to Tiburon in 22 minutes.

November 13, 1891 A new ferry slip and apron for ferryboat *Ukiah* completed at Tiburon.

November 24, 1906 Northwestern Pacific Railroad (NWP) is incorporated.

January 8, 1907 Southern Pacific and Santa Fe railroads incorporate NWP and complete the consolidation of the Railroad Company Articles of Incorporation.

April 1, 1909 Direct passenger ferry service to and from San Francisco out of Tiburon is eliminated. A new service from Tiburon to Sausalito via a stop at Belvedere begins with the aging ferry *James*



Engine 112 after the dock collapsed in June 1913. Just beyond is the new pedestrian viaduct over the yard to Mar West.



NWP's first diesel engine #1902 loading lumber cars onto a barge in 1953. The three flat cars are to keep excess weight off the gallows apron. (Codoni collection)

M. Donahue. The new small ferry *Marin* takes over this route in 1912 and continues until 1934 when buses are used to make the connection.

January 1913 Pedestrian viaduct constructed over the Tiburon rail yard from the County road near the roundhouse to Marr Street (now Mar West).

June 30, 1913 Engine 112 falls through the timbers of a recently built pier and is pulled out, repaired and returned to service.

October 23, 1914 'Golden Spike' connecting the north and south sections of NWP at Cain Rock bridge, east of Garberville establishing through service from San Francisco to Eureka, a 12 hour trip.

August 14, 1915 Ferryboat *Ukiah* carries up to 60 automobiles on rail deck. Previously, only four cars could be transported on the bow deck.

February 24, 1921 A major fire destroys the Tiburon NWP machine and car shops. The roundhouse catches fire three times but is saved.

1922 Ferryboat *Ukiah* rebuilt as passenger and automobile ferry for 2,300 seated passengers and 120 cars, and is renamed *Eureka*.

October 1926 A new automobile loading slip and apron replaces the former ferryboat *Ukiah* slip, and NWP orders three new diesel-electric car ferries. Car ferry service from Tiburon existed for

only about two to three years.

1929 Southern Pacific Railroad buys Santa Fe's interest in NWP.

1930 Tiburon Boulevard is constructed from Hilarita to Main Street connecting Tiburon directly to the Redwood Highway.

December 1930 Hilarita station (first west of Tiburon near the present day Police station) is

abandoned.

August 22, 1934 Al Capone and 40 notorious convicts from Atlanta are routed through Tiburon rail yard in sealed passenger cars. Heavily guarded, the cars are barged to new Federal penitentiary on Alcatraz island.

May 27, 1937 The Golden Gate
Continued on next page



Cars driving onto the *Redwood Empire* one of the new diesel cars ferries in 1927. The shuttle ferry *Marin* is docked at the same pier.

Bridge opened for automobiles and pedestrians.

April 22, 1947 First diesel powered engine delivered to NWP in Tiburon.

1953 Diesel engines replaced all steam locomotives.

1958 The Tiburon engine roundhouse is dismantled and NWP starts phasing out yard operations..

November 9, 1958 Passenger service to Eureka from San Rafael discontinued.

July–Sept. 1963 Pedestrian viaduct over rail yard and the last maintenance shops in Tiburon are closed.

Sept. 25, 1967 Last freight train leaves Tiburon for the San Rafael depot.

July 1968 All railroad tracks on the Tiburon Peninsula and the trestle at Blackie's Pasture are dismantled.

February 1972 The trestle over the Bel Aire School driveway is dismantled.

Jan. – Feb. 1974 Demolition of



Tiburon waterfront and rail yard, August 1965. Flat cars with freight waiting to leave the yard are on the left. Remnants of the viaduct and the remains of the roundhouse as well as the Mechanics Building, still intact, are in the center. The three-door train repair shed on the right later became the Pandemonium nautical antique shop, the Depot Palm is directly behind it. At the end of Main Street (far right) is the new platform for the Windjammer Restaurant (now Acri and Guaymas).

gallows pier (freight car apron).

1975 The stucco Mechanics Building along Paradise Drive is razed. (The flagpole at the Depot Museum came from this building).

February 26, 1995 Landmarks Society (LMS) holds an open house

at the Donahue Building for the signing of a 99-year lease with the Town of Tiburon.

September 1995 LMS moves into the Donahue building using it for office and the Archives. Over the next four years, LMS oversees a

complete restoration of the building at a cost of about \$250,000.

April 14, 1996 Donahue Building placed on the National Register of Historic Places.

May 1, 1999 Railroad & Ferry Depot Museum opened for visitors.



Gallows frame demolition February 1974 (Phil Molton collection)



National Register of Historic Places ceremony, April 14, 1996.

New Members and Membership Renewals

We are grateful to all our members and supporters, new and returning, for their generous contributions to preserve our local history. These gifts allow Landmarks to continue to acquire, preserve and maintain historic artifacts, records, photos and maps and help us keep our four Landmark sites in good repair and open to the public.

William R. Adams	Amy Grossman
Mia Addiago	Meaghan Haire
Eugene Alejo	Anne L. Hammer
Jim and Paula Berg	Nina Hanson
Kelsey Berning	Nina Hanson and
Susan Birren	David Cross
George Breslauer	Tim Harrington
Dusty Bricker	Wyman & Gay Harris
Herb and Anne Briggan	Family Fund
Samantha Briggan and	Robert and Elizabeth Hart
Garett Stillman	Elizabeth Harvey
Elliott D. Brown	Anne-Eve Hazen
John and Pat Carapiet	Christina Hecker
Lauren and Philip	Dr. and Mrs. Robert Herwick
Castagnozzi Bush	Lander Hynes
Blake and Mary Chapman	Molly K. Hynes
Joseph Cheatham	Antonia Imbimbo
Julie Coffin	Edward and
Alice Corning	Gabriella Isaacson
Mark Coulter	Brett Inman
Steven Davis	Savannah Johnson and
Christina Decker	Dustin Dwyer
Gretchen Demartini	Bob and Sharon Kahn
Linda Emberson	Jonathan Kahn, M.D.
Josephine Fong and	Rafael J. Kastl
Harrison Smith	Anne W. Kasanin
Robert Finch	Pam Keon
Rick and Debbie Fisher	David Kiefer
Nikos Flaherty-Laub	Howard and Patricia Lazar
Robert and Michelle Friend	Melissa Leach and
Philanthropic Fund	John Hawkins
Georgann Fuller	Cindy Lee and Benny Wong
Cameron Galloreese	Paul and Rebecca Li
John and Mary Gannon	Karl and Lois Limbach
Jennifer Goddard	William and
Denpong Goh	Helen Lindqvist
Janice Gorton	Lizett Lopez
Michel Graska	Patti Lorin
The Griffith Family	John and Francesca Madden
Foundation	Kenneth Marciano

Dennis M. McDonald
Daniel Mekis
JaConya Merchant and
Marcum Jones
Eilon Morav
Ann T. Morrison
Mitra Nejad-Guerin
Leslie Noble and
Tommy Casias
John Normoyle
Kara O'Dell
Keiko Otsu
Richard C. Otter
Angela Pappariella and
Steve Cho
Millo Pasquini
Lynn Pasternak
John and Kathy Pearson
Mario Peoro
Rosie Salcedo
Romney Resney and
David Sandrich
Richard and Chantal Serrano
Chris Speciale
Shaina Stern and
Matt Lasserre
Thomas Qin
Bruce and Blanche Rubin
Grace Salk
Christopher Satti
Dr. Jill Sideman
Elizabeth Simmons
Susan Simone



Christian Talau
Barbara Temby
Geri Thayer
Bill and Dina Tiedje
Michelle Treseler

Deborah Walton
Elizabeth Weisheit
Klaus and Ellen Werner
Milton and Barbara Werner
Doug and Dellie Woodring

History Collections Donations 6/2018-9/2018

Thank you to our generous donors who gifted Landmarks with their historical treasures for the archives.

Bo Thordarson – 50 sets of note cards
by her father Jasper Strandgaard.

Larry Stoddard – Two boxes of
Angel Island history documents.

Marti Andrews – Two coffee mugs
from the Dock restaurant.

Karen Cowley – Antique rocker
for the Art & Garden Center.

Music at Old St. Hilary's

Hiroya Tsukamoto

November 18, 4 p.m.

A one of a kind composer, guitarist and singer-songwriter from Kyoto, Japan presents a hypnotic blend of folk, jazz and world music. *"His music is earthy, organic and an amalgam of elements imported from diverse genres."* *"Hiroya Tsukamoto plays with fluid mastery, pristine tone, and great warmth."*



MUSAE - Dancing Day!

December 9, two performances: 1 and 4 p.m.

Musae celebrates Christmas this December with John Rutter's traditional cycle of carols, "Dancing Day!" in collaboration with harpist **Anna Maria Mendieta**. Alongside these joyful carols, Musae will present renaissance motets by Handl and Victoria and settings of the Songs of Songs by Estonian composer Tõnu Kõrvits. These songs celebrating joy and love will leave you with your heart open to the wonders of the season.

Performances are presented with generous support from the Tiburon Heritage & Arts Commission, the Allen Family Foundation and Bank of Marin.

Tickets \$20, general & \$15, seniors/youths: advance purchase available at the Landmarks Office, Tiburon Town Hall and online at Brown Paper Tickets.

Weddings & Rentals



PHOTO BY SEBASTIEN BICARD

We specialize in hosting weddings and lifetime events such as birthdays, anniversaries and retirements at our beautiful, historic Landmarks.

We would love to host your special day.

Please contact Patty Flax at societyrentals@gmail.com, 415-819-9927

Join the Belvedere-Tiburon Landmarks Society

The Belvedere-Tiburon Landmarks Society is honored to be stewarding, preserving, and enhancing the local, treasured landmarks, artifacts and open spaces of historical significance on the Tiburon-Belvedere Peninsula. Landmarks Society manages Old St. Hilary's, Railroad & Ferry Depot Museum, China Cabin, Landmarks Art & Garden Center and the History Collections for the enjoyment of our community and visitors.

Landmark activities include maintaining and enhancing our beautiful properties, leading botanical wildflower preserve walks, architectural tours, providing concerts, lectures and exhibits. The History Collections house historical local art, photographs, artifacts and documents of our community. We provide tours and educational materials to our schools and special group tours.

The historical sites and the History Collections are significant assets to our community and the costs of preservation and enhancement is expensive. The most important financial support comes from our loyal membership ~ **the backbone of the Landmarks Society**. Please join us and help preserve our local heritage and beautiful community

landmarks for future generations.

Please mail your membership choice in the enclosed envelope.

Memberships

Belvedere Bastian Benefactor \$5,000

Special Benefits: A special private event at Old St. Hilary's or China Cabin for three hours (based on availability), plus four select books of your choice on local Landmarks and local history. A large-size Northwestern Pacific Railway map. Four tickets to the concert of your choice at Old St. Hilary's.

Peninsula Guardian \$2,500

Special Benefits: A special private event at Old St. Hilary's or China Cabin for three hours (between Monday and Thursday afternoon based on availability), plus three books of your choice on local Landmarks. A medium-size Northwestern Pacific Railway map. Two tickets to the concert of your choice at Old St. Hilary's.

Tiburon Steward \$1,000

Special Benefits: Two books of your choice on local Landmarks and history. A small size North Pacific framed Railroad map. Two tickets to the concert of your choice at Old St. Hilary's.

Peninsula Steward \$500

Special Benefits: Two books of your choice. Two tickets to a concert of your choice at Old St. Hilary's.

Ring Mountain Patron \$250

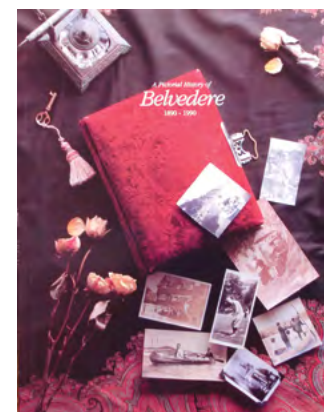
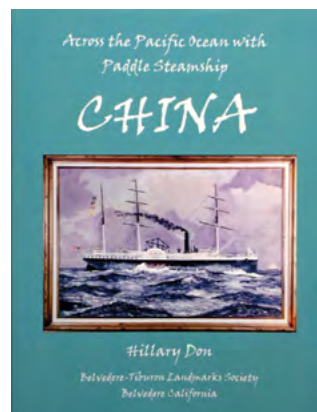
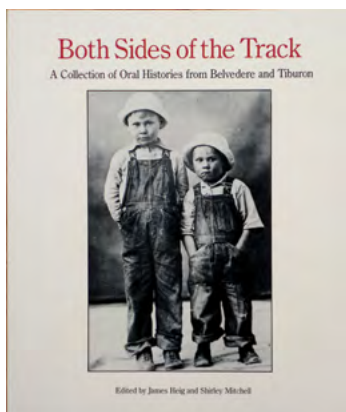
Special Benefits: One book of your choice. Two tickets to a concert of your choice at Old St. Hilary's.

Blackie's Pasture Preservationist \$100

Special Benefits: Two books of your choice on local Landmarks and history.

Wildflower Preserve Member \$75

Special Benefits: A book of your choice on local Landmarks and history.



The Donahue Building: *A History*

By Robert Harrison & Dave Gotz

The Donahue building, first known as the Tiburon Train and Ferry Depot, has watched over the Tiburon waterfront for 133 years. It has survived two major earthquakes, a devastating rail yard fire, the abandonment of the railroad and new development on adjacent properties. Restored and operated by the Landmarks Society as a museum and listed on the National Register of Historic Places, it is the oldest commercial structure in Tiburon still in regular use.



The first version of the Depot in about 1895 shows the single story connecting to the ferry passenger walkway.

Built in 1884-85 as part of Peter Donahue's new railroad and ferry terminal and deep water port, the depot building was originally designed to accommodate passengers and freight between San Francisco and North Bay communities, eventually as far north as Eureka. In the railroad's peak year of activity, 1906, more than one million commuters, tourists and excursionists passed through the depot, making the trip from San Francisco to San Rafael in less than an hour.

The original building was a single-story redwood structure with a gabled roof, about 75 feet long and 40 feet wide, with wide double doors on the ground level at the west end that allowed freight wagons and hand trucks to move easily in and out. Erected on a large wharf and nailed

directly to the wooden pier with no foundation or floor, its long low roof was supported by large carpenter trusses so the interior space could be left open and free of columns. It was attached to the existing ferry landing walkway.

Some believe the depot building was built at Donahue Landing on Petaluma River and then barged to Tiburon for the new railroad terminus. But according to newspaper reports, it was built in Tiburon. In October 1883, the *Marin Journal* announced "... a grand depot, freight sheds, roundhouse, shops, and offices are to be built." *Sausalito News* reported in February 1885, "After building a commodious ferry depot and slip, he [Donahue] still needed considerable level ground for improvements around the terminus." Other accounts mention buildings being moved from Donahue Landing but make no reference to moving a depot building.

Like other railroad structures of the era, the depot building was made to be moved around and altered as needs and operations changed. Indeed, the Donahue building did undergo many changes in its long life. In the late 1890s, builders raised the roof and added a 40-foot square second story to the structure's west end that was used for offices. This space was initially used for telegraph and railroad offices. In 1912, the large doors of the depot building were filled in and telegraph, ticket and railroad offices moved to the first floor. To make more room for the railyards and decrease fire hazards caused by flying sparks from locomotives, the building was then moved 55 feet further out on the wharf.

The Donahue building was moved for the last time in 1939. By then the original passenger



Shown in 1900, the two-story Depot is the center of passenger activity. The wide double doors are clearly visible.

slip had been demolished and most of the pier supporting the depot building was rotted. To save the building, the railroad removed the one-story section and relocated just the boxy two-story structure to the shore.

In 1907, the Southern Pacific and Santa Fe Railroads took over the old Donahue railway line and combined it with several other small railroads to form the Northwestern Pacific Railroad (NWP). When train and ferry passenger service shifted to Sausalito in 1909, the Donahue Building became a freight station transferring more than 350,000 tons a year of lumber, charcoal, grain, agricultural produce, dairy products, tools, consumer products, liquor and beer by rail and steamship ferries.

About 1913, the railroad turned the second floor of the Donahue building into a residence for Tiburon stationmasters and their families. The first to move in was William Bent. William, his wife Pat and children Thomas, Zelma and Florence occupied the home from 1913 until 1940. The Thom



Framing diagrams from "Existing Conditions Survey" by Glenn David Mathews, 1992.

family and their two children lived there from 1940 until 1948, followed by the Greens through the late 1950s. During these years, the ground floor was used for railroad apprentice training, as a Boy Scout meeting hall, and for drilling the Home Guard during World War II.

As railroad business and activity in the Tiburon rail yards waned in the 1950s and 60s, the railroad rented the depot building as office space. One of the early tenants was actor Sterling Hayden. In 1960 while he was living in Belvedere, Hayden rented an office in the building and began writing his autobiography, the *Wanderer*.

Southern Pacific Railroad, sole owner of the NWP since 1929, then began dismantling the



The Bent family poses on the water side of the Depot in about 1918. The door on the left led to the residence, the other door to the downstairs office. (Bent Family Collection)



The Donahue Depot was moved onshore in 1939, here it is in 1957.



In 1976, the Depot housed various businesses including Frank Howard Allen. (Louise Tether)

Tiburon terminal, demolishing the roundhouse in 1958 and closing the maintenance shops in 1963. Tiburon rail operations ceased in September 1967 and there was no need for the remaining yard structures. Frank Howard Allen Realty leased offices in the depot building as did Worth Publishing and Space Shell, a geodesic dome company. In 1976, the building was damaged by fire and repaired.

In 1984, Southern Pacific sold its waterfront property and development plan to the Innisfree Company who built Point Tiburon on much of the land formerly occupied by the railroad yards. After using the building as a sales office, Innisfree deeded the Donahue building and Shoreline Park

Tiburon's Founder Peter Donahue (1822-1885)

By Susan Cluff

When Peter Donahue built his railroad and ferry depot in Tiburon, he was 62, a powerful industrialist, one of the “Men of Iron” later commemorated by the bronze Mechanics Statue on Market and Battery Streets in San Francisco.

An Irishman born in Scotland, Peter grew up poor and emigrated to America, training first as a machinist on locomotives in New Jersey, then as an engineer on a gunboat in Peru. Failing to hit it big in the Gold Rush, Peter and his brothers opened California's first foundry and machine shop that became the Union Iron Works. He then founded San Francisco Gas Company (forerunner of PG&E), and in 1860 started the first cross-town streetcar line, the Omnibus Rail Way (now Muni), before turning his attention to railroads and steamships.

Around 1869, Peter began buying and building railroads in Sonoma and Marin creating a terminus at Donahue Landing (near Lakeville) on the Petaluma River. He completed a rail line to San Rafael in 1878, but what Peter needed was a quicker route to San Francisco with a large port for his steamships. He found it at Point Tiburon, a small farming and fishing hamlet and watery

to the Town of Tiburon. In 1991, the Tiburon Fire District moved into the Donahue building temporarily while the new firehouse was built, sharing space with the Belvedere-Tiburon Recreation Department.

In 1995, the Belvedere-Tiburon Landmarks Society signed a 99-year lease with the Town to develop and operate a museum depicting the history of Tiburon. The Landmarks Society made limited changes to the structure and opened the Railroad and Ferry Depot Museum in May 1999, exactly 115 years after Donahue's first train left the depot. Today the Museum hosts over 15,000 annual visitors who come to see the exhibits and learn a bit of the fascinating history that is the story of Tiburon.

graveyard for abandoned ships, just six miles across the Bay from the City.

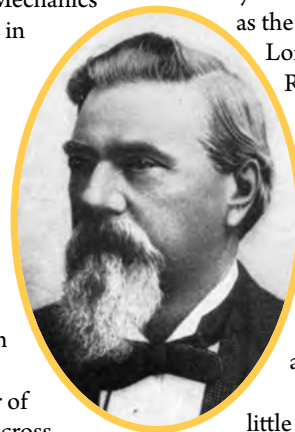
In 1883, the *Marin Journal* noted that Donahue was on site in Tiburon supervising, “counseling in every detail, suggesting, advising or approving as the case may be.” For now it was a race!

Long time rival, North Pacific Coast Railway, was rushing to build a new narrow gauge rail line to Sausalito.

Hiring more workers and adding more shifts, Peter promised to open his new standard gauge railway by May 1, 1884 and throw a huge party. His first passenger train met the ferry *James M. Donahue* from San Francisco and pulled out of Tiburon as scheduled.

Inspecting his Tiburon rail yards a little more than a year later, Peter caught a cold and died, his fortune divided between his widow, his son and his daughter. Obituaries described Peter as a good-looking man with endless energy, a man who loved a good joke and could fit in almost anywhere, not an easy man to work with but ...“a splendid example of honest push.”

Of all his achievements, perhaps his last was his greatest. “Peter Donahue has left behind him a monument greater than a sculptor's cunning could ever design,” wrote the *Marin Tocsin*. He founded Tiburon.



Consider Volunteering

It's time to give back,
share your talents and
meet new friends.



Consider Volunteering for the Landmarks Society

- | | |
|-----------------------------------------------------------------------|------------------------------------------------------------|
| <input type="checkbox"/> Gardening | <input type="checkbox"/> Thrift Shop Volunteer |
| <input type="checkbox"/> China Cabin Docent | <input type="checkbox"/> Old St. Hilary's Docent |
| <input type="checkbox"/> Office Support | <input type="checkbox"/> Mailings |
| <input type="checkbox"/> Community Outreach Committee | <input type="checkbox"/> Junior Board of Directors |
| <input type="checkbox"/> Marketing Committee | <input type="checkbox"/> Structural Preservation Volunteer |
| <input type="checkbox"/> Social Media Specialist | <input type="checkbox"/> Website Volunteer |
| <input type="checkbox"/> Tiburon Railroad & Ferry Depot Museum Docent | |

Call Cathy Larson, Community Outreach Manager at 415-435-1853

Thank you

Landmarks would like to thank the following people for their kindness and generosity.

Peter and Kimi Brooks of Brooks Tree Care for trimming and pruning of multiple trees at Old St. Hilary's and the Landmarks Art & Garden Center.



Piper and Miles Berger for their generous donation sponsoring lunches for our Holiday Art & Craft Sale artists.



Ann Salk and Family for helping us move loads of inventory to our upstairs storage.

Angelica Andrews Buot and Howard Flax for helping to paint the Landmarks office.



Susan Cluff for all of her help in the archives and her writing and keen editing eye.



Jim Allen for picking loads of pears and helping us to make what is sure to be an epic batch of Landmarks Pear Brandy.



Support Landmarks When You Shop

You can support Landmarks through various merchant programs that donate a percentage of your purchase when you shop. These donations add up and can really make a difference.

Do you shop at **Nugget's Market** at the Cove Shopping Center? If so, come by the office and pick up a Nugget Market Community Scrip card. Then go online to www.nugget.com/community to register your scrip card choosing Landmarks as the charity you want to benefit. You then show your Scrip Card to the cashier before paying for your groceries, and Nugget will donate up to 4% of your purchase to Landmarks.



Woodland's Market has an e-scrip program that will donate up to 5% of your purchase amount to Landmarks. Just fill in an application at the store using Landmarks ID number #5000017312. You can view how much money you've donated to Landmarks by going to ecrip.com/woodlands.

If you shop online, you can add Landmarks to your **Amazon Smile** account and the company will donate .5% of your eligible purchases directly to Landmarks. There is currently no limit on the total amount so the higher the total at checkout, the more Amazon donates. But you have to sign up and use the Amazon Smile website. Go to smile.amazon.com on your desktop or cellphone, find your Account at the top of the page, and click on Option to Change/Add Your Charity. Then type in "Belvedere-Tiburon Landmarks Society."

Thank you for your support.

New Landmarks Society Board Members

Suzanne White

Suzanne White is our newest board member. She has worked tirelessly at the Art & Garden Center this year and her touch is evident throughout the property. Suzanne moved to Tiburon two years ago and promptly joined Landmarks. She feels strongly about giving back to her new community and brings excellent proactive managerial skills along with a knack for building consensus to the Board. In her previous life, Suzanne was the Director of Grants Management for the National Heart, Lung and Blood Institute, National Institutes of Health, in Bethesda MD where she annually oversaw 2.2 billion dollars of federal grant funds. We are thrilled that she has settled in Tiburon and is so giving of her time and energies, which are focused on restoring the Art & Garden Center and its beautiful gardens with the goal of sharing the site with more of our community.



Bob Harrison

We are delighted that Bob Harrison became a new member of the Landmarks Board at our July meeting. Bob has been a fixture at the Railroad and Ferry Depot Museum over the last decade and was awarded a Lifetime Membership with Landmarks by the Board. He looks forward to increasing the number of visitors to all Landmarks locations and will be working on marketing for Landmarks. A retired traffic engineer, his strong communication skills and deep knowledge of Tiburon history make him an invaluable addition to the Board. We are thrilled that he will be dedicating even more energy toward Landmarks' endeavors.

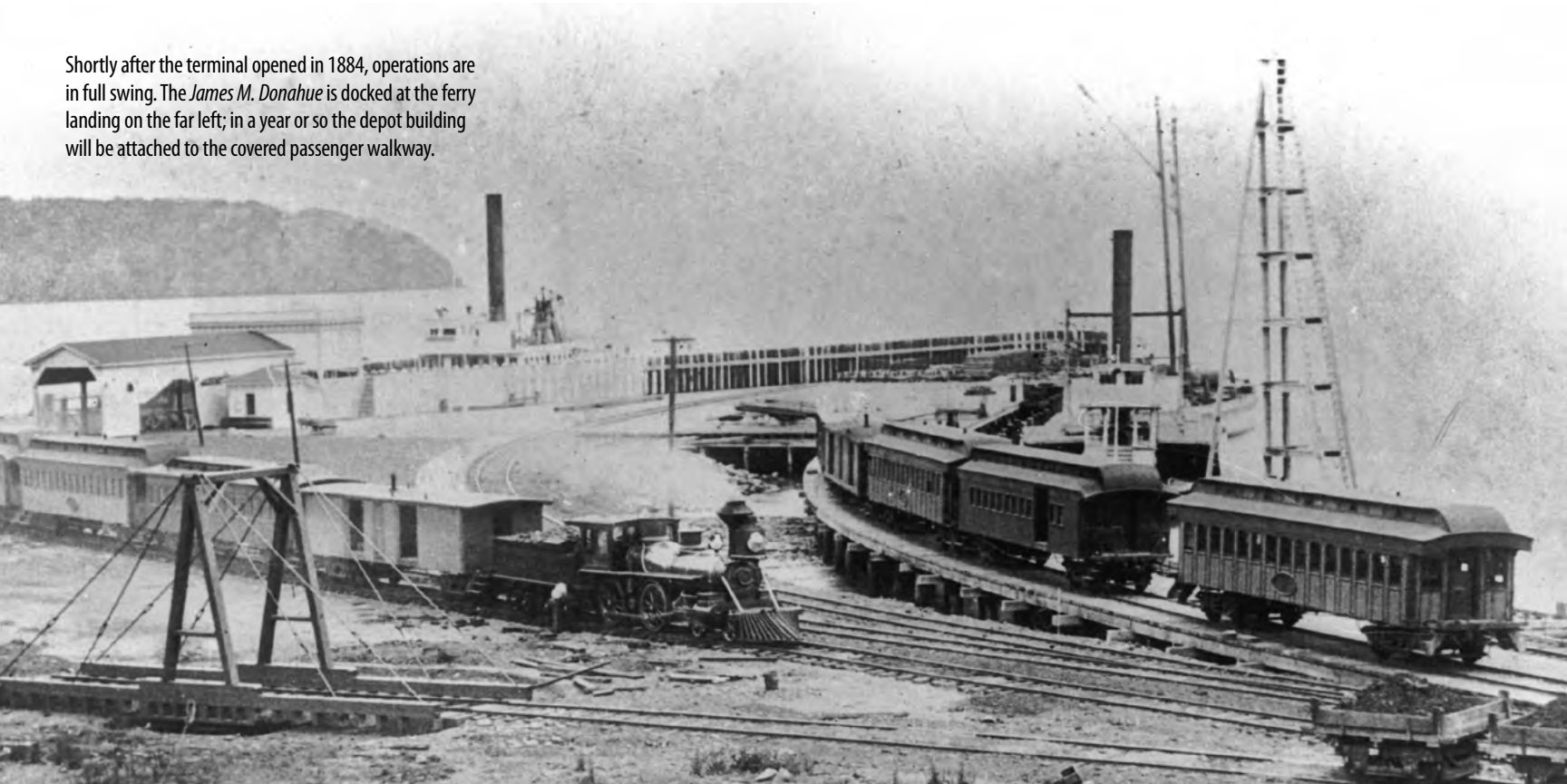


Belvedere-Tiburon Landmarks Society
1550 Tiburon Blvd., Suite M
Belvedere-Tiburon, California 94920
www.landmarksociety.com
415-435-1853

Non-Profit
U.S. Postage Paid
Belvedere-Tiburon, CA
Permit No. 8

Become a Belvedere-Tiburon Landmarks Society Member

Shortly after the terminal opened in 1884, operations are in full swing. The *James M. Donahue* is docked at the ferry landing on the far left; in a year or so the depot building will be attached to the covered passenger walkway.



Railroad & Ferry Museum
1920 Paradise Drive



China Cabin
52 Beach Road



Old St. Hilary's
201 Esperanza Street



Art & Garden Center
841 Tiburon Boulevard



History Collections
1550 Tiburon Boulevard