

LANDMARKS

Living History ~ The Tradition Begins With You

Fall Winter 2019



Detail from Selden Gile mural (see page 5)

**Plein Air Painting In Tiburon
Wakamatsu Anniversary at China Cabin
Remembering the Sixties**

**Founding Members of the Landmarks Society
Music at Old St. Hilary's
Planned Giving – The Landmarks Endowment**

Become a Member of the Landmarks Society – Ensure Another 60 Years of Preservation

President's Corner

On May 16, 2019, we marked the 60th anniversary of the incorporation of the Belvedere-Tiburon Landmarks Society. This anniversary year is filled with many events at our historic sites. Thanks to Landmarks member's generosity, we have completed the painting of the floor and added new carpeting at Old St. Hilary's. We also varnished the outside window frames at China Cabin which need continued maintenance due to our ocean air and fog.

In April, we held a workday at the Art & Garden Center with 20 volunteers including a crew from Ireland-Robertson & Hadley Construction, and our local arborist, Board member Peter Brooks, professionally trimmed our trees and shrubs. Mark Pearce, a local contractor and Tiburon native, has been giving of his skill and time to make sure our sites are structurally sound and kept free of aging issues. (All our structures are well over 130 years old!) And now, after a busy summer at the Railroad & Ferry Depot Museum, we are finally scheduling the sealing of our leaky roof to get ready for our winter rains.

On June 7, head docent Jack Fiorito hosted 40 guests, including the Consul General of Japan, at an event commemorating the establishment of the Wakamatsu Tea & Silk Colony near Sacramento in 1869. This was held in the China Cabin, the social lounge of the Pacific Mail Steamship China that brought the first Japanese colonists to California.



The Colony's 150th anniversary was then celebrated with a three-day festival at the American River Conservancy in Coloma.

In July, our Railroad & Ferry Depot museum welcomed a new exhibit, a model of the famous paddle wheel steamer ferry *Sausalito* that carried passengers, railcars and cars across the Bay for 39 years until 1933, the year construction began on the Golden Gate Bridge. On loan from the Marin History

Museum, this scale model is nearly six feet in length and was built in 1950 by Dr. Thomas Snead, a local dentist and ferry historian.

Our sites have always been favorites for celebrations such as weddings and birthdays. On June 30, we had a first at the Railroad & Ferry Depot Museum when young man proposed marriage to his girlfriend at the museum and she accepted. He chose the Depot museum as it is one of their favorite places. We wished them much happiness as they left to celebrate.

Some upcoming events this fall and winter:

- ✓ Landmarks' Annual Fundraiser, October 12, 2019 (save the date).
- ✓ Landmarks Annual Meeting at Tiburon Town Hall, November 10.
- ✓ Landmarks' Annual Holiday Art & Crafts Sale, December 7 at the Art & Garden Center.

In this our 60th year, we again invite you to help continue our mission and join us in supporting, participating, volunteering and visiting our four irreplaceable historic sites and Landmarks History Collections at the Boardwalk.

Phil Cassou

Landmarks Docents – Making History Come Alive

In the last 60 years, more than 100 docents have volunteered with Landmarks! Docents share our beautiful Landmarks buildings with the public and make history come alive for residents and visitors. If you'd like to learn more, meet new friends and make a meaningful contribution to our community, contact us about training. Openings are available on weekdays and weekends. Call Cathy Larson, Community Outreach Manager at 415-435-1853.

Thank you to our current docents:

Ferry Depot and Railroad Museum

Phil Cassou*
Bob Harrison*
Phil Maslin*
Joan Bergsund
Peter Biss
Francis Brooks
Steve Callender
Ted Carter
Frank Cassou
Jenine Cosio
Mike Cunha
Linda Emberson
Peter Engler
Elaine Enochs
Mark Freiberg
David Hayes
Holly Hooker
Jay Hooker

Karl Hoppe
Cathy Larson
Chuck Laurenson
Maggie McCann
Bob McDermott
Torill McDermott
Courtney McNellis
Klaus Meinberg
Ted Moyer
Joan Palmero
John Owen
Donald Pino
Becky Pringle
Frank Trusheim
Betty Williams
Jeanne Wilson
Old St. Hilary's
Helen Lindqvist*
Annelies Atchley
Bob Finch
Molly Keil Hynes

Gee Kampmeyer
Helen Muirhead
China Cabin
Jack Fiorito*
Jim Allen
Mimi Clarke
Delores B. Conlan
Jack Gallagher
Zohre Grothe
Sandy Hoft
Cathy Larson
Ron Okulski
Joyce Wells
Art & Garden Center
Suzanne White*
Sheila J. Holmes
Sandy Roller

* Head Docents

We apologize that the article "Preserving Wildflowers & Open Space" in the last edition of our Newsletter misquoted Eva Buxton regarding the number of plants growing in the Old St. Hilary's wildflower preserve. The number of species, including weeds, is not known at this time.

Surveys to determine the flora will occur next year. Three rare species, including the Tiburon Jewelflower, some unusual species, as well as common plants have decreased in number due to overuse of the preserve.



Landmarks Society 2019 Board Officers

Phil Cassou, *Board President*
Jim Allen, *Co-Treasurer*
Brooke Halsey, *Co-Treasurer*
Helen Lindqvist, *Secretary*

Board Members

Peter Brooks Eva Buxton
Bob Harrison Gay Keil
Jean Wang Lin Suzanne White

2019 Junior Board Members

Lauren Halsey, Lucas Lagerling,
Tessa Kamanski, and Maya Kress

Staff

Patty Flax, *Executive Director*
David Gotz, *Archivist*
Cathy Larson, *Community Outreach Manager*
Jennifer Hartung, *Administrative Assistant*

Editors/Writers: Phil Cassou,
Susan Cluff, Patty Flax and
David Gotz

Design: Mark Shepard,
shepgraphics.com

.....
Except where noted, all photos from the
Landmarks Archives

Director's Message

Yes, we're excited to be celebrating 60 years of Landmarks this year! And we're grateful to the many volunteers, donors, community leaders, foundations, docents and past and current residents of Belvedere and Tiburon who took this journey with us and help us to continue preserving, maintaining and sharing our local history and irreplaceable community treasures.

To ensure another 60 years of Landmarks, I'd like to encourage supporters to consider making a legacy gift to our Endowment Fund to help provide a perpetual source of funds for the important work we do. Without this critical source of funding we would not be able to continue as an organization since we draw funds from the fund every year to cover operating costs above what we raise from our supporters. If we can grow the Endowment Fund from its present \$1.5 million to our Board's goal of \$10 million, the funds it generates from investments will ensure that our work continues regardless of the waxing and waning of annual campaigns, site fundraising efforts and event bookings.



We hope you will join us for our Peace, Love & History fundraiser to celebrate our 60th at the Art & Garden Center on Saturday, October 12, 2019 for dinner and dancing on the lawns and patios overlooking the Bay. Sixties attire is encouraged and it's sure to be the grooviest party in town. Contact our offices at 415-435-1853 to purchase tickets. The cost is \$125 per guest.

Please check our Events Calendar on page 13 for upcoming concerts at Old St. Hilary's, plein air painting at the Art & Garden Center and our Annual Meeting in November. This year, our Annual Holiday Arts and Crafts Sale will be held Saturday, December 7, 2019 and we have a fantastic group of artists, some new and some returning, that you won't want to miss. It's rumored we may have Landmarks famous Pear Brandy, vintage 2019 available for tasting.

We're looking forward to your continued support in 2019 and into 2020. Please drop by the Landmarks Office at the Boardwalk, visit our Railroad & Ferry Depot Museum, China Cabin, and our Archives and Historical Collections during posted hours. We love to visit with you, answer questions and hear your stories.

With gratitude and wishing you a happy fall and holiday season.

Patty Flax

Landmarks Wish List

If you can help, please call the office at 415-435-1853

- * Complete ferry boat exhibit room at museum
- * Painting (all sites)
- * Roof repairs
- * New bird netting at China Cabin
- * Upgrades to irrigation system at Art & Garden Center
- * New energy-efficient museum lighting
- * Victorian birdhouse restoration
- * Pew repair at Old St. Hilary's

PEACE, LOVE & HISTORY
60 YEARS OF THE LANDMARKS SOCIETY

SATURDAY, OCTOBER 12, 2019
5 - 9 PM @ LANDMARKS ART & GARDEN CENTER
COCKTAILS, DINNER & DANCING
60'S ATTIRE ENCOURAGED

For tickets and more information call 415.435.1853
or visit www.landmarkssociety.com

Peace, Love & History Event Sponsors

- Law Office of Brooke Halsey
- Delicious Catering
- Faire La Fête
- Mandy Scott Events
- Marin Event Lighting
- Standard Party Rentals
- Jim Vetter Photography



Plein Air Painting in Belvedere and Tiburon

By Susan Cluff

The Tiburon Peninsula has long been a place that has inspired the imagination. Since the late 19th Century, artists and painters have come here to Marin trying to capture its unique light, colors, sea, marsh and hill landscapes by hiking to a good vantage spot, setting up a portable easel, and painting *plein air*.

Painting in the outdoors became popular after shows of Impressionists work were exhibited at the 1915 Panama-Pacific International Exposition in San Francisco. These included European artists like Claude Monet, Camille Pissaro and Paul Cezanne and Californian Impressionists like Thomas Hill, William Keith and Arthur Mathews.

In the early 1920s, a Northern California group known as the Society of Six emerged that included Selden Gile, Maurice Logan, Louis Seigrest, William Clapp, Bernard Von Eichman and August Gay. Led by Selden Connors Gile (1877-1947), they went on long weekend hikes into Bay Area hills and marshes. Long days of painting were followed by cooking, wine and conversations about life and art back at Gile's rented home in Oakland or weekend cabin on an ark in Tiburon Cove.

Though painting outdoors took considerably more effort and included challenges such as blisters, wild animals, bugs, onlookers, and bad weather, the results were worth it as they found

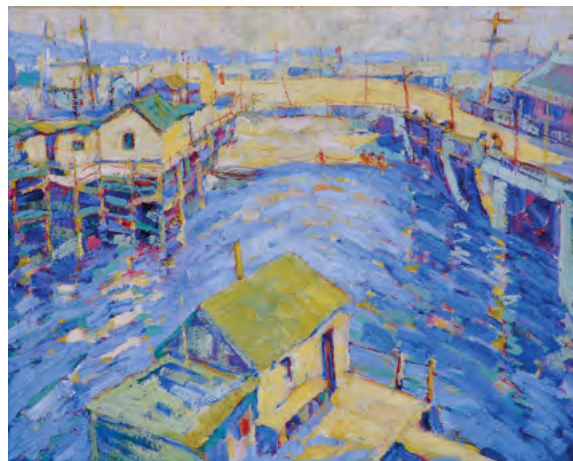
their paintings done on location came alive. "Took a ten mile hike this morning and came back with ass dragging on the ground," wrote Gile to a friend at this time. "All the old meadowlarks, all the frogs croaking in all the little ponds, sort of gives one a thought of all's well that ends well."

The Group of Six painted in a bold, modernist style using bright, expressive

colors to capture the visual impression of sunshine and colors of the land, sea and sky, preferring the bright light of midday when there were few shadows. Painting together, living together, eating together, they exhibited together in shows from 1923-28 but made little income.

In 1927, when the ark lagoon in Tiburon was filled in, Selden Gile moved permanently to a cottage on stilts in Belvedere on Beach Road.

There he continued to paint local landscapes along with fishermen at docks, Chinese laundry workers, and workers at the fish cannery nearby. Well-known



Untitled Painting (Drawbridge & Beach Road), 1926-1929 by Selden Gile. Donated to Landmarks by Edward Holloran Estate in 2011.



Selden Gile in Tiburon, 1925.

by locals, he worked as a part time librarian in Belvedere from 1934-43. He died in 1947, leaving over 500 completed canvases in his study.

Following World War II, *plein air* landscape painting did not see a resurgence until the 1970s and 80s. But today, the tradition of capturing the area's great beauty on canvas is alive and well with *plein air* painting workshops

and events at Landmarks Art & Garden Center on Tiburon Boulevard.

Once a bunkhouse for brick kiln workers, the historic cottage was donated to the Landmarks Society in 1995 by long-time residents William and Helen Newman to be used as an art center. In 1998, Landmarks volunteers started work to restore the cottage and its overgrown and neglected gardens. Today, the pathways, lawns and terraces with their mature trees, plantings and colorful garden beds make perfect vista points from which to paint the Tiburon Peninsula's ever-changing nature, the hills and the Bay.

Below: "Corinthian Island, The Cove and Tiburon Hills from Belvedere Island Marin County, California, 1937 by Selden Gile.



150th Anniversary of Wakamatsu Colony Celebrated at China Cabin

By Susan Cluff & Jack Fiorito

On April 30, 1869, 22 Japanese immigrants under the leadership of German-born John Henry Schnell boarded the *P.S. China* in Yokohama for San Francisco to start a tea and silk colony in the U.S. The party included Schnell, his Japanese wife Jou, their infant daughter and 17-year old nanny Okei. These were the last of the Togugawa samurai

The ship's surgeon was also the librarian and the purser arranged entertainments around the two large meals provided a day.

One of the highlights of the trip after crossing the dateline was meeting the *Great Republic* heading west-bound to Yokohama to exchange

mail and information. On May 20, the *China* entered the Golden

Gate and docked in San Francisco at the Pacific Mail Steamship Wharf at First and Brannan Street. "The health on the voyage has been remarkably good," claimed Captain Warsaw. "Not a single death has occurred..."

The Colony

The colonists transferred their cargo onto a riverboat to Sacramento and proceeded east to Placerville by wagon train. On June 7, they founded the Wakamatsu Tea and Silk Farm Colony on a 220-acre ranch in Gold Hill, welcoming a second group of colonists the next year. Applying the farming skills they brought with them, they exhibited silk cocoons, tea and other plants at the State Fair in Sacramento in



Illustration of Okei leaning on rail of spar deck as John Schnell, his wife and daughter wave goodbye to Japan by Alpen Kelley in "Okei-san, the Girl from Wakamatsu" by Joan Barsotti.

1869 and the San Francisco Horticultural Fair in 1870. Unfortunately, the colony was not successful, due in part to the lack of irrigated water and a shortage of funds. In 1871,

Schnell and his family returned to Japan and the colonists scattered.

In 1969, the Wakamatsu colony site in Gold Hill was designated a California Historic Landmark. The property was purchased by the American River Conservancy in 2010 and the National Park Service placed it on the National Register of Historic Places.

China Cabin

From 1867-1879, the *China* carried passengers, mail, cargo, and treasure across the Pacific before it was retired and scrapped in Belvedere Cove. Today, only the social hall remains an elegant reception area on the top aft deck for the use of first-class passengers. Once used as a private residence, the *China Cabin* was fully restored in 1986 and is now a museum and event space for the Landmarks Society.



Landmarks docent Jack Fiorito welcomes a descendent of the Wakamatsu colony at the *China Cabin* on June 6 to celebrate the 150th anniversary of the first Japanese colony in America.

defeated in the Boshin civil war of 1868-69 and the first Japanese immigrants to settle in California. Included in their luggage were 50,000 mulberry trees used for the cultivation of silk worms, six million tea seeds, 500 vegetable wax trees and a great number of bamboo plants.

The Voyage

P.S. China was one of four Pacific Mail Steamship Company's sidewheel paddle steamships built to open up commerce with China and Japan. Built in 1867 and costing over a million dollars, it set new standards for speed, passenger safety and comfort.

The eastbound voyage from Yokohama took 20 days, covering over 4,700 nautical miles at an average speed of 7.7 knots. The steamship *China* carried 1,310 passengers (1,000 in steerage), the U.S. mail, 1,315 tons of cargo and more than 100 crew, many of them engaged in Hong Kong for the round trip.



Lithograph of *P.S. China* by Endicott & Co, New York, circa 1867. Collection of Stephen J. & Jeremy W. Potash.

Remembering the SIXTIES

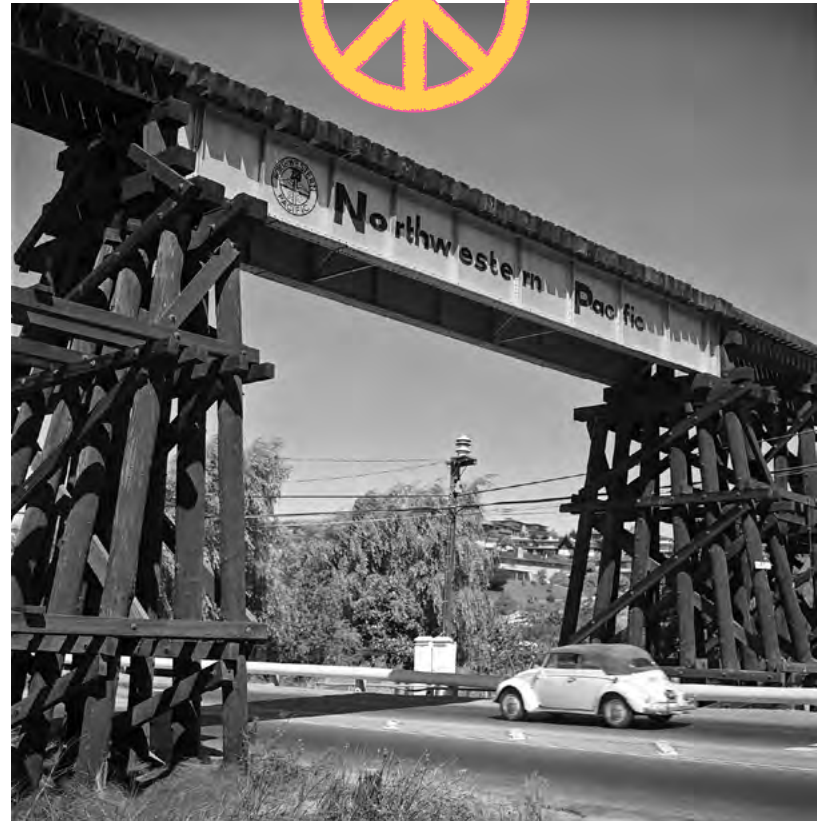


By Dave Gotz

The Sixties were a time of incredible change. New inventions, new music, new art and fashion, the beginning of space exploration, computers, and the environmental movement. It was a simpler time too. People knew their neighbors. Kids walked or biked to school. Jello was a salad, Fritos, Kool Aid and Twinkies were healthy snacks. And then there were those crazy hippies playing that rock and roll music, saying things like “groovy,” “hip,” and “far-out.”



Tiburon Main Street looking east in February 1960. The stores were repainted in the 1955 “Paint Up”. The Depot Palm is on the far right with a few remaining railroad buildings painted Southern Pacific yellow beyond.



The trestle over Tiburon Boulevard in July 1968 not long before it was taken down.



Left: Even as the railroad buildings were being demolished, kids still had fun in the yard. In this photo from December 1964 the recently completed Safeway store (now CVS) is in the distance on the left.

Right: Blackie the sway-backed horse, stood for 30 years in the pasture near Trestle Glen. After his death in 1966, Tiburoners rallied to save the land for public use.





Mantagani's Corner Market Super was built in the mid-50s with a second story added later. Next door was a liquor store and cleaners, later Paradise Burger and New Morning Café.



Just below Mar West Street the abandoned railroad yard was good place for artistic photography and graffiti. In the center are the gallows wheels now on display at the Depot Museum.



Gas prices have changed a lot since the '60s, so has the Tiburon city limit, which is now near Blackfield Drive. On the left is the Safeway (now CVS), in the distance is the Tiburon Lodge.



As a fundraiser to benefit the wildflower preserve at Old St. Hilary's on July 28, 1962, Landmarks brought four passenger coaches over from San Francisco and offered three round trips to San Rafael. Over 700 people took this last opportunity to see southern Marin from the NWP rail line through three tunnels and over the long trestle at Blackie's Pasture. The trips included a strolling folk singer performing railroad songs. (left, embarking from Tiburon; right, returning from San Rafael).



The Tiburon Marina at the corner of Main street in June 1964, was active until 1966 when the Windjammer Restaurant (now Caffè Acri) was built here.



Larry Bogel remembers, "At about age 13, I started hanging out at Lou & Ray's Garage, I'd spend quite a few hours here just enjoying cars." Larry's first job was working at the service station on the corner of Tiburon Blvd. and Beach Road, seen here in August 1965.

Sixties... continued

Here in Belvedere and Tiburon, the Sixties changed everything. Rampant development slowed, Tiburon became a City, people started standing up for what they believed in and realizing where and how they live, and that their own history was important. See if you remember...



Jeanne Price remembers, "In the summer of 1962, a barge landed at the vacant lot next door carrying two halves of the Moffitt Mansion which had been salvaged from Pacific Heights in San Francisco." The mansion still stands at 8 West Shore in Belvedere.

Tiburon's "Goat Lady" Rose Rodrigues de Fonta Verrall, walks one of her goats along the Boardwalk Shopping Center in 1960.



No childproofing necessary! Just a dirt hill and some friends. Children play at Belvedere Nursery School circa 1965.



Midwinter sailboat race in Belvedere Cove, 1968.



City of Tiburon employees move into the new City Hall at 80 Main Street on Ark Row in June 1966, their third location in two years. this location was used until 1978.



Regular Tiburon ferry service to San Francisco is restored in 1969 with the Harbor King, "two decks, a coffee bar and room to roam around."



Tiburon Firehouse No. 2 opens at Paradise Drive and Trestle Glen in late 1966.



Incorporation committee chairs Elva Pasko and Nicki Lamott present adding machine tapes and petitions with signatures needed to file for Tiburon incorporation to County Clerk George Gnos.

Landmarks Historical Collections

In 1959, the Belvedere-Tiburon Landmarks Society began gathering and conserving historical items and documents to chronicle the history of the area known as *El Rancho Corte Madera del Presidio* that now includes Strawberry and Tiburon Peninsulas, the City of Belvedere and the Town of Tiburon.

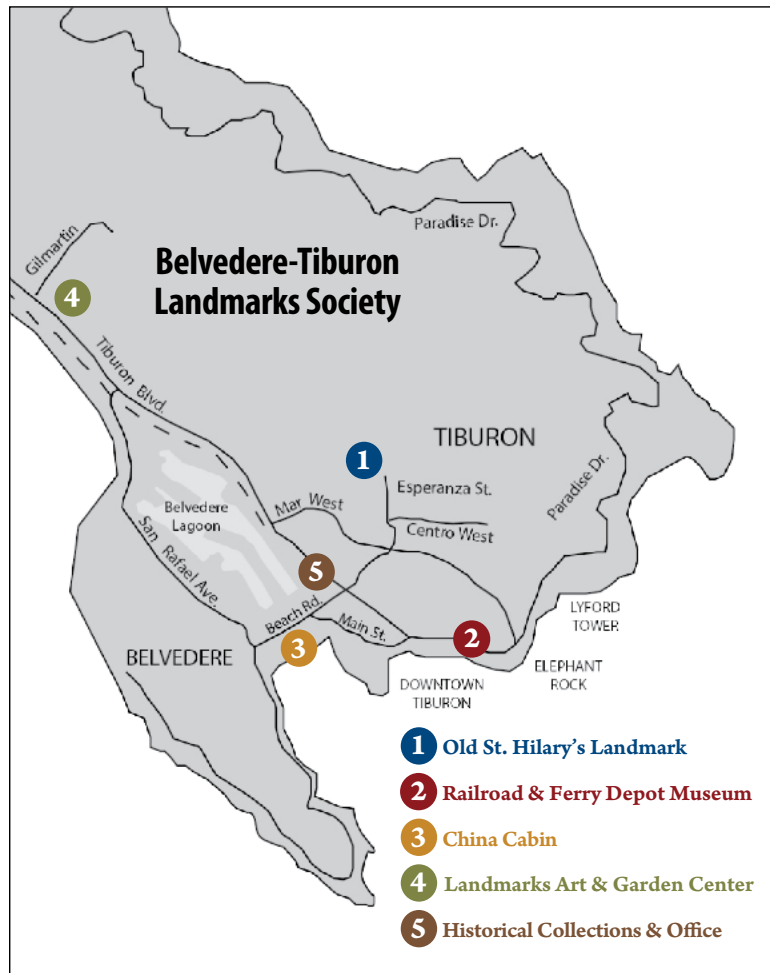
Located on Tiburon Boulevard in the Boardwalk Shopping Center, Landmarks History Collections is now the primary resource for information and illustrations about local history. Its climate-



controlled space contains record and filing systems for safe storage of thousands of irreplaceable items, a work area, equipment for the repair and care of fragile material and a small display space for rotating exhibits and Landmarks books, pamphlets, guides and maps.

Currently, Landmarks is looking for photographs, posters, menus, postcards and memorabilia from the 1960s era after the railroad left Tiburon and many of the surrounding suburbs were built. To contact our Archivist Dave Gotz, email him at lmsarchivist@sbcglobal.com, or phone: 415-435-5490. Hours are: Tuesday through Thursday, 9 am to 1 pm.

Left: Archivist Dave Gotz sifting through files in the History Collections in search of another important fact."



Thank you

A huge thank you to the wonderful individuals and businesses in our community that have given generously for our 60th anniversary silent auction, which will be held at our October 12th celebration – Peace, Love & History.

American Classics & Performance	Susan & Roderick Fraenkel-Cattell	Starbucks	for assisting in the pick up of the model paddlewheel steamer ferry Sausalito for the Railroad and Ferry Depot Museum.
Janice Anderson-Graham & Tom Graham	Alice Fredericks	Sweet Things	Mary Eklund for organizing and scheduling volunteers at the Tiburon Thrift Shop for five-plus years!
Angel Island-Tiburon Ferry	Michelle Friend	Tiburon Fire Department	Jean Lin for her dedication to Landmarks and for her service on the Board for two years. We appreciate her continued support as a Tiburon Thrift Shop volunteer and her participation on their Board representing the Landmarks Society.
Lynda & Jim Allen Archival	Jennifer & Chris Hartung	Tiburon Spa	
Ark Newspaper	Jennifer Hull	Tiburon Thrift Shop	
Keith Bartel Goldsmith	Gabby & Glen Isaacson	Tiburon Wine	
Alexis Berger	Cathy Larson	Two Hands Skin Care	
Miles & Piper Berger	Jean Lin	Vineyard Vines	
Faith & Stephen Brown	Paula Little	And, thank you to...	
Alan Brune	Local Spicery	Piper Berger for her amazing curation of silent auction items for our Peace, Love & History event.	
Cecile Starin Designs	Lois & Bob Meredith	Susan Cluff for her help in the History Collections and her writing and keen editing eye.	
Corinthian Yacht Club	Shirley Mitchell	Brooke Halsey for lending his time and truck to pick up a rickshaw for our silent auction and	
Custom House II	Point Reyes Farmstead Cheese		
Diana's	Paige Peterson		
Mike Eagan	Jeanne Price		
Jane Elkins	R & S Service		
Evo Spa	The Kappy & Mark Reed and The Martha Property		
Debbie & Rick Fisher	Camerin Ross		
Flax art & design	Sylvia Ross		
Flourish	San Francisco Yacht Club		

MUSIC AT Old St. Hilary's



Caroluna

October 6, 4 p.m.

Sehnsucht - Arias and Art Songs elucidating ineffable desire.

Avant-garde soprano Caroluna sings music by French, German and Italian masters of the art song, lieder and opera: Debussy, Fauré, Messiaen, Bizet, Clara and Robert Schumann, Puccini, Bellini and more.

Hiroya Tsukamoto

November 17, 4 p.m.

A one of a kind composer, guitarist and singer-songwriter from Kyoto, Japan, Hiroya Tsukamoto takes us on an innovative, impressionistic journey filled with earthy, organic soundscapes that impart a mood of peace and tranquility. *"His music is an amalgam of elements imported from diverse genres."* *"Hiroya plays with fluid mastery, pristine tone, and great warmth."*



MUSAE

December 8, two performances: 1 and 4 p.m.

Musae presents a program of music exploring the darkest season of the year and the hope it stirs in us for the light to come.



"The Bleak Midwinter" includes music from contemporary American composers Eric Barnum and Carson Cooman alongside arrangements of traditional carols. We hope you will join us for this musical celebration of winter!

Performances are presented with generous support from the Tiburon Heritage & Arts Commission, the Allen Family Foundation and Bank of Marin.

Tickets \$20, general & 15, seniors/youths (\$5 more at the door): advance purchase available at the Landmarks Office, Tiburon Town Hall, and Brown Paper Tickets.

Weddings & Events

We specialize in hosting special events such as weddings, receptions, birthdays, anniversaries, retirements, corporate retreats and other celebrations at our historic Landmarks buildings. Many locals and visitors come back again and again to celebrate lifetime events with us, sometimes two or even three generations, creating new memories and traditions at Landmarks.

Consider hosting your next celebration at Old St. Hilary's, China Cabin, or the Landmarks Art & Garden Center. For more information, contact Patty Flax at societyrentals@gmail.com.



Our first advertising poster for weddings from about 1960.



Planned Giving – *Keeping History Alive*

For 60 years now, the Belvedere-Tiburon Landmarks Society has been committed to preserving our four great historic sites and historic archives on the Tiburon Peninsula and keeping our local history alive with presentations, articles, books and booklets, workshops and events. Your gifts make our work possible and we hope to keep going for another 60 years and well into the future.

A planned gift to the Landmarks Endowment is a unique way for you to support the future work of the Landmarks Society during your lifetime and beyond. These gifts require a little bit of planning but provide an opportunity to ensure that future generations will continue to appreciate these wonderful buildings and open space, and remember and enjoy our unique history.

To date, many individuals have supported Landmarks Endowment Fund, with donations large and small. The income from this fund generates approximately a third of our revenues and is used for historic restorations, operating costs and keeping our landmark buildings in good repair — Old St. Hilary's, the Railroad & Ferry Depot Museum, the Arts & Garden Center and China Cabin. Our endowment fund is a permanent, self-sustaining source of funding, and grows and provides support for these purposes indefinitely.

When you contribute to Landmarks Endowment Fund, you create a permanent legacy of support for our treasured landmarks. Whether you do this through your estate and retirement planning, or as a one time or recurring gift that's made during your lifetime, it is a great way to support the Landmarks Society.

Contact our offices at 415.435.1853 for more information.



Join the Belvedere-Tiburon Landmarks Society

Please join us as a member of the Landmarks Society. Your membership directly supports our mission and makes Tiburon and Belvedere's history a meaningful part of everyday life in our community. Help us continue to preserve and share our history by maintaining our beautiful historic venues and providing free access to our Historical Collections and archives. Make your tax-deductible gift today.

Memberships

BENEFACTOR **\$5,000**

Special Benefits: A private event at Old St. Hilary's, China Cabin or the Art & Garden Center for three hours. A large-size Northwestern Pacific Railway map. Four Tickets to the concert of your choice at Old St. Hilary's.

GUARDIAN **\$2,500**

Special Benefits: A private event at Old St. Hilary's, China Cabin or the Art & Garden Center for three hours (Monday – Thursday). Two tickets to the concert of your choice at Old St. Hilary's.

STEWARD **\$1,000**

Special Benefits: Two books of your choice on local landmarks and history. A small-size Northwestern Pacific Railway map. Two tickets to the concert of your choice at Old St. Hilary's.

HISTORIAN **\$500**

Special Benefits: A book of your choice on local landmarks and history. Two tickets to the concert of your choice at Old St. Hilary's.

PATRON **\$250**

Special Benefits: Two tickets to the concert of your choice at Old St. Hilary's.

PRESERVATIONIST **\$100**

Special Benefits: A book of your choice on local landmarks and history.

FRIEND **\$60**

Celebrating sixty years of Landmarks.

**All donors will receive our
60th Anniversary car or window decal.**

Calendar

Fall-Winter 2019-2020

SEPTEMBER 2019

Thursday, September 26

10 am - 2 pm
Free Plein Air Painting
Landmarks Art & Garden Center

OCTOBER 2019

Sunday, October 6

4 - 6 pm
Music at Old St. Hilary's - Caroluna

Saturday, October 12

5 - 9 pm
Peace, Love & History – A Celebration
& Fundraiser
Landmarks Art & Garden Center

Thursday, October 24

10 am - 2 pm
Free Plein Air Painting
Landmarks Art & Garden Center

NOVEMBER 2019

Artist as Historian:

A Collection of fine art of
Old St. Hilary's displayed at the
Tiburon Town Hall.

Sunday, November 10

4 - 6 pm
Landmarks Annual Meeting
Tiburon Town Hall

Sunday, November 17

4 - 6 pm
Music at Old St. Hilary's – Hiroya
Tsukamoto

Thursday, November 21

10 am - 2 pm
Free Plein Air Painting
Landmarks Art & Garden Center



Friday, November 29

1 - 4 pm
Railroad & Ferry Depot Museum
Open

DECEMBER 2019

Artist as Historian:

A Collection of fine art of
Old St. Hilary's displayed at the
Tiburon Town Hall.

Saturday, December 7

10 - 4 pm
Holiday Art & Craft Sale
Landmarks Art & Garden Center

Sunday, December 8

1 pm and 4 pm Performances
Music at Old St. Hilary's – Musae

Thursday, December 26

1 - 4 pm
Railroad & Ferry Depot Museum
Open

JANUARY 2020

Wednesday, January 1

1 - 4 pm
Railroad & Ferry Depot Museum
Open

Thursday, January 23

10 am - 2 pm
Free Plein Air Painting
Landmarks Art & Garden Center

FEBRUARY 2020

Wednesday, February 5

9 am - Noon
Marin Master Gardeners Talk
Open to the public
Art & Garden Center

Thursday, February 27

10 am - 2 pm
Free Plein Air Painting
Landmarks Art & Garden Center

MARCH 2020

Wednesday, March 4

9 am - Noon
Marin Master Gardeners Talk
Open to the public
Art & Garden Center

Thursday, March 26

10 am - 2 pm
Free Plein Air Painting
Landmarks Art & Garden Center

APRIL 2020

Wednesday, April 1

9 am - Noon
Marin Master Gardeners Talk
Open to the public
Art & Garden Center

Wednesday, April 1

1-4 pm
Railroad & Ferry Depot Museum
Opens for the Season -
Wednesday through Sunday

Saturday, April 4

1-4 pm
China Cabin Opens for the Season
Saturdays and Sundays

Sunday, April 5

1 - 4 pm
Old St. Hilary's Opens for the Season
Sundays

Thursday, April 23

10 am - 2 pm
Free Plein Air Painting
Landmarks Art & Garden Center



Old St. Hilary's (1988) By Mirielle Piazzoni Wood.

The First Landmarks Board



Beverly Bastian, Ann Allen, Charles Durrie, Carol Ericson, Russell Keil, Louise Teather, Tom Proctor, Bill Brooke.

Like so many great ideas, it all started at a kitchen table when Landmarks founders Beverly Bastian, Carol Ericson, Susanna Dakin and Louise Teather decided to form a nonprofit charitable organization to save the little white church on the hill above Tiburon. In choosing a name, the fledgling group thought other historical landmarks might one day need saving, so it became the Belvedere-Tiburon Landmarks Society.

The Society then started gathering members, hosting fundraising events to restore the church building and buy additional open space around it, and collecting historical artifacts, maps, photos and stories about local history from earliest times through the rancho and railroad eras to the present day.

That first Landmarks Board represented a variety of community

interests and occupations: **Beverly Bastian**, community activist, **Susanna Dakin**, author and philanthropist, **Carol Ericson**, long-time secretary for St. Hilary's parish church, **Louise Teather**, writer and historian, **Admiral Frank Beatty**, U.S. Navy (retired), **William Brooke**, architect, **William Brantman**, import-export executive, **Russell D. Keil**, estate manager and former president of the California Pioneers, **Thomas Lacey**, attorney, **Alejandra Pedley** and **Ann Allen** from prominent Belvedere families, **Thomas Procter**, real estate, **Vera Schultz**, Marin County Supervisor for Southern Marin, **Lewis Vogler**, public relations, and **Dr. Robert Watkins**, Mayor of Belvedere.

In this, our 60th year, we owe them all a deep debt of gratitude.

Susan Cluff, Volunteer

Two years ago, Susan walked into the Landmarks Archives office and asked how she could help. She had just moved to Belvedere from Mill Valley and wanted to learn more about local history here. Since then, she's volunteered many hours in the archives using her research, writing and editing skills and contributing articles to Landmarks Newsletter and 94920 magazine.

In her previous life, she ran a PR agency, coached public speaking, created communications programs and milestone events for Fortune 500 companies and fundraised for local schools and charities. We're thrilled that she has settled here and enjoys giving her time and energy to sharing our stories and collections with our community.



Phil Maslin, Railroad Docent

This is Phil's 11th year as a railroad docent. He is the painter, electrician and programmer for the four running trains at our model of Tiburon's rail yard at the Railroad & Ferry Museum, a regular leader for our third grade tours by local schools, and helped give two presentations on Tiburon's railroad history to standing room crowds at the Corinthian Yacht Club, "The Railroad that Started Tiburon." He joined our Landmarks Board in 2010 and served as president in 2013-14. He is a great example of a local resident's involvement in keeping our history alive and available to visitors and the community. We are grateful for the continuing gift of his time and knowledge.



And thank you to our wonderful Tiburon Thrift Shop volunteers for all of their time dedicated on Fridays and some Saturdays!

Ziola Avila	Dave Gotz	Joyce Kami	Liz Paterson
Piper Berger	Carolyn Grey	Mike Katz	Sylvia Ross
June Campbell	Judy Groesbeck	Mary Lane	Janice Russell
Susie Cattell	Lynne Hayes	Cathy Larson	Bunny Sommer
Lisa Choy	Susan Hendrickson	Kathy Lederer	Nancy Sumner
Mimi Clarke	Sheila Holmes	Jean Lin	Susan Svanfeldt
Mary Eklund	Pat Iannotti-Kern	Joyce Martin	Linda Woodrum
Debbie Fisher	Craig Jessup	Keiko Otsu	

New Members and Membership Renewals

We are grateful to all our members and supporters, new and returning, for their generous contributions to preserve our local history. These gifts allow Landmarks to acquire, preserve and maintain historic artifacts, records, photos, artwork and maps and help us keep our Landmarks sites in good repair and open to the public.

August 2018 - Present

Dennise Abad	Alana Brune	Catherine F. Dillon	Sallie Griffith	Pauline Kelly	Rev. George L. McLaird	Emma Reilly	Alison and Jack Stiefel
Matt Abrams	Kathleen Burke	Mary Bachman and William Downing	Amy Grossman	Georgia and John Kern	Karen and Michael McMullen	Jennifer and Brian Riley	Jeffrey Sutton
William R. Adams	Joan and Roy Burkett	Madeleine Doyle	Katie Grosswald	Patrick Kerslake	Maureen Meikle	Barbara and Eric Roberts	Sandra Swanson
Leslie Airola-Murveit	Eva Buxton	Jacque Dracott	Sarah Gukowsky	Dusty Bricker and Patrick Kiernan	Barbara J. Meislin	Brenda and Dexter Roberts	Trudy Taich
All Seasons Catering	Caffe Acri, Kathleen Servino	Antonia Draeger	Seneca Gupta	Gretchen B. Kimball	Gail and Alec Merriam	Lauren Rosenberg and Mauricio Rojas	Judi and Stan Taubman
Donna Allen	Steve Callender	Anne and Larry Drew	Zvi Guterman	Janette and Bill Knick	Charlotte Mesa	Sandy Rollieri	Joyce H. Tayer
Lynda and James Allen	Louise and Angelo Capozzi	Theresa Driggs	Anthony and Patricia Guzzardo	Elena Kovalchuk	Susan W. Michaud	Katherine & William Roop, ARS	Jeff Teather
Winifred and Harry B. Allen Foundation	Pat and John Carapiet	Ed Espino	Lydia Fayal and James Allan Hall	Kate Kroll	Wendy Miller	Robert F. Rosenbluth	Paris Teijeiro
Diana and Jonathan Alvarado	Jay Carson	Ed Espino	Sharon and Jeff Lamoree	Valerie A. Montague	Shirley Mitchell	Camerin Ross	Gerri and Donovan Thayer
Courtney Ammons	Diane and Rob Cassil	Jaleh and Galen Etemad	Mary and Nathan Lane	Lois and Bruce Moody	Elaine Moore	Sylvia Ross	Maureen Broderick and David Thompson
Donna Amon	April and Phil Cassou	Judith Ets-Hokin	Erica Lang	Elaine Moore	Marcia and Michael Rubenstein	Susan Cluff and Neil Rudolph	Yvonne and Nick Thurmond
David P. Anderson	Sara Castellano	Isabella Ferrey	William W. Lary	Robin Moore	Rustic Bakery, Inc.	Adelheid Rutherford	Tiburon Classic Car Show
Janice Anderson-Gram	Pamela Dekema and Richard Champe	Angelo P. Figone	Marsha and Michael Lasky	Madeline and Robert Morey	Henry Timnick	Ann T. Morrison	Dina and Bill Tiedje
Annie Andrews	Mary and Blake Chapman	Robert O. Finch	Charles Laurenson	Chris Morrison	Michelle Dravland and Thomas Tobin	Michael R. Moyle	Leigh Ann Townsend
Mel Anthony	Sylvia Chase	Shirley and Jack Fiorito	Patricia and Howard Lazar	Michael R. Moyle	Leigh Ann Townsend	Helen and Fraser Muirhead	Paxton Trollope
Katie Ball	Heather Chatfield	Suzanne Fiorito	Susan and Michael Lazarus	Sage Catering	Jeanne and Peter Tymstra	Musica Marin	University of California
Susan Yun and Sharhar Bar	Ivy Chen	Debbie and Rick Fisher	Toni Lee	King and Bruce Sams	Library Acquisitions	Irene M. Myers	Jodee and Rick Upjohn
Ann Mary and Kyle Belek	Helen Lee and Eric Cho	Mary C. Fishman	Judy and Bob Leet	Caroline R. Sanders	Cynthia Zierhut and Emmanuel Ursi	Sofia and Bob Nadjibi	Cres Van Keulen
Anonymous	Jane and Avery Chope	Julie and David Flaherty	Christine LeGrand	Monika Sandoval	Robin Vance	Megan Netzinger	Jere Visalli Photography
Kate and Cameron Baker	Avery Chun	Carol Toby Flax	Alex and Bob Leitstein	Romney Resney and David Sandrich	Barry Joseph	William Newland	Julianne Walker
Nancy Barbour	Peter and Mimi Clarke	Patty and Howard Flax	Mimi and Walter Levison	David Sandrich	Ron Okulski	Arlene and Chip Nielsen	Wendy and Robert Walley
Shirley and Stephen Barker	Colette G. Clowes	Erdmuth Folker	Craig L. Lieber	Jennifer and Ron Sann	Stephanie Craig and Matthew Oliver	Marcelino and Shirlee Nogueiro	Deborah Walton
Lisa McDade Barto	Bunny and David Cobb	Genevieve and Thomas Folsom	Lois Limbach	Felipe Santiago and Barry Joseph	Marina On	Terry D. O'Neill	Mark Warcholski
Cathy and Jim Bedilion	Julie Coffin	Alice Fredericks	Jean Wang Lin	Virginia Sargent	Peggy and Tom O'Neill	Sara Nunez-Lagos	Megan Ward
Joan and Don Bekins	Janet and Alan Coleman	Mark B. Freiberg	Sharon Lincoln	Beverly B. Savitt	Keiko Otsu	Ron Okulski	Judy C. Webb
City of Belvedere	Lauren Combes	Christy Newman and Thomas Friedman	Jeannine Coulter and Scuyler Lindgren	Rekha Schipper	Dawn and John Owen	Stephanie Craig and Matthew Oliver	Elizabeth A. Weisheit
Belvedere-Tiburon Newcomers Club	Dolores B. Conlan	Robert and Michelle Friend	Helen and Bill Lindqvist	Caren and Matthew Schmidt	Gig and Mel Owen	Matthew Oliver	Carol Weiss
Carol and Leslie Benet	Betty Conner	Philanthropic Fund	Katrina Loop	Cynthia and Stephen Schneider	Kathleen Palmer	Marina On	Amanda Price Weitman
Debbie and Shawn Bennett	John F. Craemer	Hanna Fritzing	Danielle Lopez	Deborah Mazzolini and Eric Schoenberg	Benjamin Paramonte	Peggy and Tom O'Neill	Joyce Wells
Sue Benvenuti	Brett E. Crawford	Xuyu Fu	Carolyn Losee	Sally and Steve Schroeder	Nancy and Derek Parker	Keiko Otsu	Ann and Larry Wheat
Jim and Paula Berg	Stacey and Bruce Crawford	Georgann Fuller	Kenneth C. Lucas	Isabelle and Ben Schuman	Ellen and John Parsons	Keiko Otsu	Suzanne and James White
Piper and Miles Berger	Robert Crowder	Meaghan Haire and Mark Gaffney	Diane Lynch	Mary Crofton and Eric Schwab	Lynn M. Pasternak	Keiko Otsu	Malcolm K. Whyte
Joan Bergsund	Deb Cullen	Barbara Cupper	Joan and Steve Lynch	Dorinda and Steve Sears	Barbara Patten	Keiko Otsu	Fran and Barry Wilson
Susan and Robert Bernheim	Jeanne and Don Dana	Lee Darby	A'Laina and Patrick Lyons	Glenda and Don Sears	Kathlyn M. Masneri and Arno P. Masneri Fund	Keiko Otsu	Jeanne Wilson
Kelsey Berning	Amy and Steven Davis	Ken and Ann Davis	Melanie and Peter Maier	Rajni Shankar	Peter Mason	Keiko Otsu	Judith Wilson
David Berry	Ken and Ann Davis	Peter J. Davis	Jessica Malek	Mark Pearce	Dr. Brian R. Matas	Keiko Otsu	Gary Winston
Mark Bewsher	Tracy and Clinton Davis	Christina Decker	Carly Marin	Kathy and John Pearson	Mary Jane Mateer	Keiko Otsu	Barbara and Marty Winter
Shannan and Steve Bishop	Christina Decker	Benta Hansen and Bill Deer	Marin Community Foundation	Vicki and Pete Pedersen	Renee and Mark Matossian	Keiko Otsu	Nikki and Jim Wood
Barbara and Larry Bogel	Christine and Jose del Castillo	Christina Decker	Marin Event Lighting	Paige M. Peterson	Jemy & Theodore Matteson	Keiko Otsu	Daniel Woodhead, III
Carolyn Boord	Delicious Catering, Inc.	Christina Decker	Pamela Martori	Janneke Picciocchi	Tera and Brian Matthews	Keiko Otsu	Dellie and Doug Woodring
Jean Bordon	Catherine DeVido	Robert F. Greeley	Phillippa and Phil Maslin	Meghan Potter	Judy Mayne	Keiko Otsu	Ruth Wosser
Meredith Bowman	James E. Demmert	Deborah and John Greenspan	Kathlyn M. Masneri and Arno P. Masneri Fund	Ashton Price	Charmaine and Luke Mazur	Keiko Otsu	Amanda Wulfstat
Concetta Brightbill	Rachel DeRenzi	Joseph Grenn	Richard and Lynn Payne	Jeanette H. Price	Barbara and Richard McAuliffe	Keiko Otsu	Betsy and Coleman Youngdahl
Evelin and Paul Brinich	Peter Bruck	Carolyn and Doug Grey	Mark Pearce	Becky and Bob Pringle	Kerianne and Christopher McBride	Keiko Otsu	Ronald Zech
Elliott Brown		Emily Grey	Mark Pearce	Karen Bodnarok and Justin Quilliam	Joy and Gene McCabe	Keiko Otsu	Laleh Zelinsky
Faith and Stephen Brown		Joyce and Saburo Kami	Mark Pearce	JoAnn Quinn	Maggie Brooks McCann	Keiko Otsu	Dongdi Zhou
Louise and Brian Brown		Jackie Dickson	Mark Pearce	R and S Service, John Everrett	Dennis McDonald	Keiko Otsu	Jose Zuniga
Nancy and Hank Bruce			Mark Pearce	Rama Ranganath	Joan and Roger McGee	Keiko Otsu	
Peter Bruck			Mark Pearce	Mark E. Reed	Connie McHugh	Keiko Otsu	

Belvedere-Tiburon Landmarks Society
1550 Tiburon Blvd., Suite M
Belvedere-Tiburon, California 94920
415-435-1853

www.landmarkssociety.com

Non-Profit
U.S. Postage Paid
Belvedere-Tiburon, CA
Permit No. 8

Become a Belvedere-Tiburon Landmarks Society Member

To revitalize the town, Fred Zelinsky purchased much of Main Street and Ark Row and paved the dirt lot behind it. Here it is in June 1961 with the Tiburon Playhouse and parking lot just completed.



Railroad & Ferry Museum
1920 Paradise Drive



China Cabin
52 Beach Road



Old St. Hilary's
201 Esperanza Street



Art & Garden Center
841 Tiburon Boulevard



History Collections
1550 Tiburon Boulevard