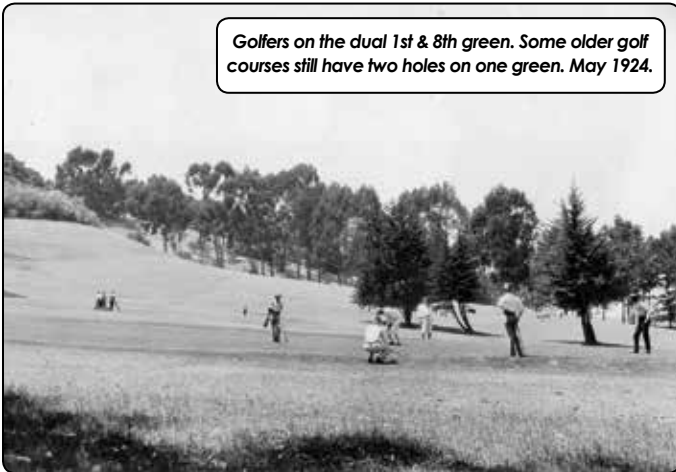


BELVEDERE GOLF AND COUNTRY CLUB

By Dave Gotz

Golfers on the dual 1st & 8th green. Some older golf courses still have two holes on one green. May 1924.

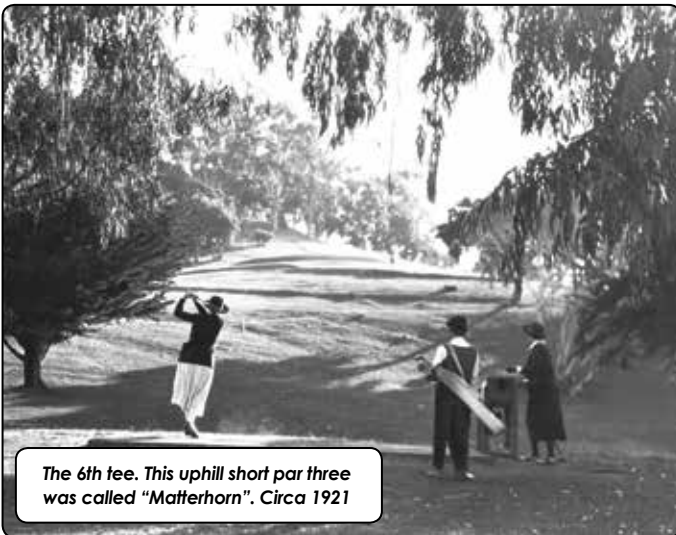


Over a century after its founding, it is difficult to believe that a golf course existed on Belvedere Island. But exist it did, flourishing for almost 20 years. A news item in 1925 declared: "Belvedere links have a reputation for being desirable because they're not too strenuous. Climate and scenery are especial assets." The Belvedere Golf and Country Club was located on the northern end of the island. The hilly nine-hole course with tennis court and clubhouse (still standing at 1 Britton Ave.) occupied a quarter of a square mile of land north of Oak Avenue, stretching from San Rafael Avenue on the east, to the crest of the island overlooking Richardson Bay on the west. Tamalpais, North Point, Marin, Buckeye, lower Golden Gate and lower Bayview avenues, which came into being in the 1940's-60's, probably all have lost golf balls buried beneath their asphalt.

The Belvedere Golf and Country Club was opened May 23, 1914 with 127 active and 4 junior members. Rules included: children were not allowed in the clubhouse but could be brought onto the front porch in the company of a parent or guardian; local residents were allowed as visitors, provided they were "suitable persons," living in Belvedere or within five miles, and came no oftener than four times a year; and "gentlemen" had the right of way on the course on Saturdays, Sundays and holidays. Other activities were popular as well as golf including tennis tournaments, bridge and afternoon teas on the porch, and numerous stage productions.

The Club was quite successful for the first 15 years, so much so that in 1926 an additional 9 holes was proposed on lagoon fill from dredging of Belvedere Cove. However the stock market crash and the resulting depression brought the Club to its end. In October 1933 the Belvedere Land Company, which owned the land, decided that the abandoned club house should be taken over and a caretaker installed. Four months later the Company voted to sell the personal property of the golf club to offset the delinquent rent of \$7,950. The Belvedere-Tiburon Landmarks Society is the non-profit history organization for the Tiburon peninsula. Please help preserve local history by becoming a member, call: 415-435-1853.

The 6th tee. This uphill short par three was called "Matterhorn". Circa 1921



Aerial photo from 1936 showing the location of the golf course holes and the Club House.