

This photo from about 1914 shows Portuguese dairymen in the corral at the Big Reed Dairy, near where Bel Aire School is now located.



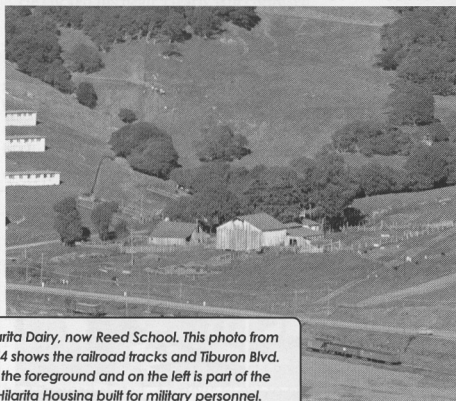
## TIBURON DAIRIES BECOME TIBURON SCHOOLS

By Dave Gatz

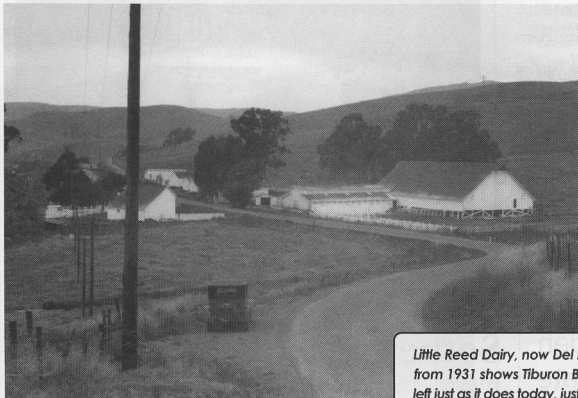
In 1834 John Thomas Reed was granted the Rancho Corte Madera del Presidio ("where wood is cut for the Presidio") by the Mexican government; an area of about one square league (4,400 acres) which included all of the Tiburon and Strawberry peninsulas plus parts of Mill Valley and Corte Madera. His children inherited these lands in the early 1870's and established three dairy farms evenly spaced along the Tiburon Peninsula. The dairies operated until the late 1940s and early 1950s when they closed, primarily due to their small size and the encroachment of residential development.

The timing of the demise of the dairies aligned with the post-World War II migration to California which brought many new "baby boom" families to the Peninsula. The mostly level dairy properties turned out to be ideal locations for the new Reed Union School District's schools, which were immediately needed for the growing school-age population. One by one the dairy sites became school properties.

Over the coming months the Landmarks Society's article in *Belvedere-Tiburon* 94920 will take a close look at each of the dairy properties and the schools which replaced them.



Hilarita Dairy, now Reed School. This photo from 1944 shows the railroad tracks and Tiburon Blvd. in the foreground and on the left is part of the Hilarita Housing built for military personnel.



Little Reed Dairy, now Del Mar School. This photo from 1931 shows Tiburon Blvd. snaking right then left just as it does today, just before the intersection with Ave. Miraflores, at the bottom of the hill.